

DIOCESE
OF
BALLARAT
CATHOLIC
EDUCATION
LIMITED



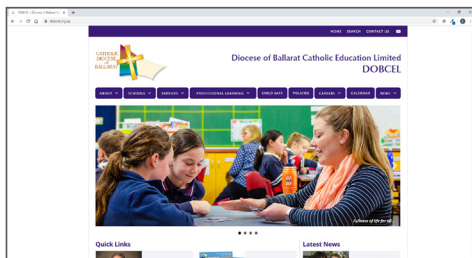
DIRECTORY 2023

DIOCESE OF BALLARAT CATHOLIC EDUCATION LIMITED

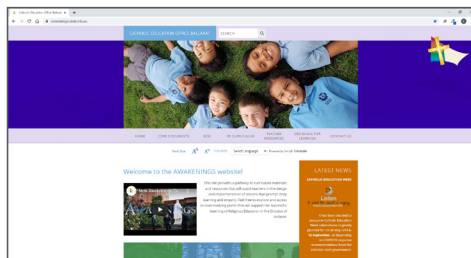


*As partners in
Catholic education
and open to God's presence,
we pursue fullness of life for all.*

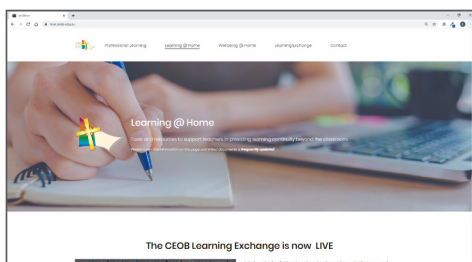
VISIT US ONLINE



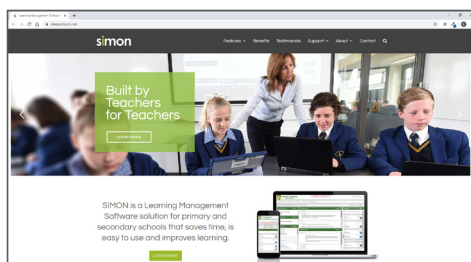
DOBCEL – dobcel.catholic.edu.au



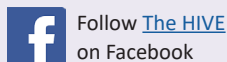
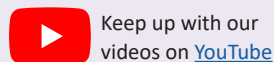
Awakenings – awakenings.ceob.edu.au



The HIVE – hive.ceob.edu.au



SIMON – www.simonsschools.net



ACRONYM REFERENCE GUIDE

ACARA	Australian Curriculum, Assessment and Reporting Authority	ECSI	Enhancing Catholic School Identity
AITSL	Australian Institute for Teaching and School Leadership	ESL	English as a Second Language
CARSO	Compliance and Risk Support Officer Forum	GAC	Grants Allocation Committee
CCG	Catholic Capital Grants	HR	Human Resources
CEB	Catholic Education Ballarat	ICON	Integrated Catholic Online Network
CECV	Catholic Education Commission Victoria	ICT	Information Communication Technology
CI&M	Catholic Identity & Mission	(P)	Primary
DLF	Diocesan Leadership Framework	OLSAL-B	Oral Language Supporting All Learning
DOBCEL	Diocese of Ballarat Catholic Education Limited	RE	Religious Education
EAL	English as an Additional Language	(S)	Secondary
		(TP)	Targeted Programs
		VRQA	Victorian Regulations and Qualifications Authority

CATHOLIC EDUCATION BALLARAT LOCATIONS

Ballarat

200 Gillies Street North
Lake Wendouree VIC 3350
P 03 4344 4350

E execdirector@dobcel.catholic.edu.au
W dobcel.catholic.edu.au
ABN 45 121 091 506

Horsham

6A McLachlan Street, Horsham
PO Box 20, Horsham VIC 3402

Mildura

255 Eleventh Street, Mildura
PO Box 5106, Mildura VIC 3502

Swan Hill

2 Murlong Street, Swan Hill
PO Box 727, Swan Hill VIC 3585

Warrnambool

92a Liebig Street, Warrnambool
PO Box 1019, Warrnambool VIC 3280
P 03 5561 1177

SCHOOL LOCATIONS

School listings begin on page 36.

ACKNOWLEDGEMENT OF COUNTRY

Diocese of Ballarat Catholic Education Limited and schools of the Ballarat Diocese acknowledge the traditional custodians of the land on which our diocesan education community is situated – from the Murray to the Sea. We commit to working in partnership with Aboriginal people for reconciliation and justice, and pay our respects to elders past, present and emerging.

CONTENTS

Websites and Locations	2	DOBCEL Board Directors	9
Acronym Reference Guide	2	Partnership Networks and Teams	10
Message from the Bishop	3	CEB Organisational Structure Chart	11
Message from the Board Chair	3	CEB Leadership Team	12
Message from the Executive Director	4	CEB Staff Contacts	15
Diocesan Education Vision	5	School Contacts	28
Strategic Directions 2020-24	5	Central Zone Schools	29
School Governance and Policy	6	Northern Zone Schools	32
DOBCEL Standing Committees	7	Southern Zone Schools	35
DOBCEL Governance Diagram	8		

This directory was last updated on **7 March 2022**. The most recent version is available at dobcel.catholic.edu.au/directory
For enquiries, feedback or to request an update, please contact news@dobcel.catholic.edu.au

Cover: Our Lady Help of Christian's School, Wendouree

MESSAGE FROM THE BISHOP



200 years ago, Fr John Therry founded a school in Parramatta, west of Sydney. It was the first official Catholic school in Australia. There were 31 students. From those small beginnings, Catholic education has grown to provide for young people all around the country. The first Catholic schools in our diocese of Ballarat were founded in 1849 – All Saints School in Portland and St Patrick's School in Port Fairy. As more and more people settled throughout Victoria, new parishes were established and schools provided a focal point for the local Catholic community. In our diocese today, we rejoice in 53 primary schools and 11 secondary schools.

Some of our schools are quite small, like that first Catholic school in Parramatta. Others are much larger, some with over a thousand students. But whether they are large or small, our schools have a common mission. They seek to nurture the gifts of each student and build a community inspired by the teaching and example of Christ. Jesus came that we might have life and have it to the full. Our Catholic schools seek to lead each student to the fullness of life. Jesus came to serve. Our Catholic schools encourage students to use their gifts in service.

As we begin a new school year, I ask God's blessing on all the students, staff and families involved in Catholic education in our diocese. The past two years have brought extra challenges because of the Covid pandemic. As we move into 2022, the challenges continue. I give thanks for the way our school communities have met the challenges so far and I am confident we will meet the challenges of the year ahead.

When we look at the history of Catholic education in this country and when we look at the vibrant school communities we have around our diocese today, we have good reason to have firm faith in the future.

A handwritten signature in blue ink, reading "Paul Bird".


Bishop Paul Bird CSsR
Bishop of Ballarat

MESSAGE FROM THE BOARD CHAIR

On behalf of the Board, I would like to welcome you all to the new school year.

The past two years have been challenging for everyone in our school communities, CEB and parishes. The dedication and commitment of our staff, families and students has been outstanding. While the pandemic may not be completely behind us, past experience has shown us that when we work together, we can build a caring and supportive community which enables our students to achieve the best educational outcomes.

The Board looks forward to continuing to working with you all in 2022.

A handwritten signature in black ink, reading "Tracey O'Neill".

Tracey O'Neill
Board Director and Chair
Diocese of Ballarat Catholic Education Limited (DOBCEL)



MESSAGE FROM THE EXECUTIVE DIRECTOR

Welcome to the 2022 Directory of Diocese of Ballarat Catholic Education Limited (DOBCEL), designed to assist you in understanding the diverse work and the equally diverse personnel of our leadership, service and partnership organisations.

Across our diocese, 64 Catholic primary and secondary schools, 58 DOBCEL parish schools and 6 schools governed by Religious Institutes or Ministerial Public Juridic Persons, provide distinctive Catholic education from the Murray to the Sea.

Catholic Education Ballarat is the operational arm of DOBCEL and is responsible for the implementation of DOBCEL strategies, policies and procedures, and overseeing the day to day running of our schools.

The role of DOBCEL is to lead, provide service to, and partner with all 64 schools to enable every student to flourish and every student, staff member and family to experience the presence of the risen Christ in our schools.

I wish all of our 64 school communities the very best for 2022 as we all strive to bring about our vision:

*As partners in Catholic Education,
open to God's presence,
we pursue fullness of life for all.*



Tom Sexton
Executive Director
Catholic Education Ballarat



VISION

*As partners in Catholic education
and open to God's presence,
we pursue fullness of life for all.*

MISSION

We journey towards this vision through:

- Proclaiming and witnessing to the Good News of Jesus Christ
- Ensuring quality learning that promotes excellence and fosters the authentic human development of all
- Living justly in the world, in relationship with each other and in harmony with God's creation
- Exploring, deepening and expressing our Catholic identity in diverse ways
- Enabling each one of us to reflect more fully the image of God

CONTEXT

In 2012 the schools and colleges of the diocese collaboratively set about establishing a vision to guide the Catholic education community now and into the future. Our schools operate in a diverse and geographically extensive diocese which covers the west of Victoria, extending from the Murray River in the North to the Southern Ocean in the South. The Diocese of Ballarat is a place of natural, communal and economic diversity.

Catholic education in the Diocese of Ballarat occurs in interwoven communities of learners gathered in Jesus' name. It has its foundation in communities of believers who have made their education system a place of welcome to reach out to nurture all God's people. Generations of diocesan clergy, religious congregations and lay people have endeavored to establish the flourishing educational communities that exist today, with each school an expression of our foundational belief that we are all created in the image and likeness of a loving God.

Partnering: A Step Further articulates Catholic Education Ballarat's strategic directions in Catholic education over the next five years. These directions will both exemplify and promote partnership across the diocesan education community, whilst ensuring equity in the allocation of resources for Catholic schools in the Ballarat Diocese.

Partnering: A Step Further was officially launched on Thursday 13 May, 2021 (delayed due to COVID-19). The PDF document and launch video are available at:

dobcel.catholic.edu.au/strategic-directions



SCHOOL GOVERNANCE AND POLICY

School governance in the Diocese of Ballarat is structured as follows:

- 58 parish schools are governed by Diocese of Ballarat Catholic Education Limited (DOBCEL)
- 6 schools and colleges are governed by Religious Institutes or Ministerial Public Juridic Persons

ABOUT DOBCEL

Bishop Paul Bird established a company limited by guarantee, Diocese of Ballarat Catholic Education Limited (DOBCEL), and appointed a board of directors to govern parish schools.

The Board of the company reports directly to Bishop Paul as the Bishop of the diocese and as the member of the company. It also approves education policies in consultation with and for the whole diocesan education community.

The day to day management of the schools governed by the company is delegated to the Executive Director, Catholic Education, and Principals of these schools have the appropriate delegations to lead and manage their schools and their staff.

Visit the DOBCEL website for further information: dobcel.catholic.edu.au

DIOCESE
OF
BALLARAT
CATHOLIC
EDUCATION
LIMITED



DOBCEL BOARD OF DIRECTORS AND EXECUTIVE SUPPORT

Member:

Bishop Paul Bird CSsR DD

Director and Chairperson:

Ms Tracey O'Neill

Company Directors:

Mr Terry Harney
Dr Berenice Kerr rsm
Fr Kevin Maloney
Mr Stephen McArdle
Monsignor Glynn Murphy
Ms Anne Pekin
Dr Helen Weadon

Executive Director,

Catholic Education Ballarat:

Mr Tom Sexton

Co-Company Secretaries:

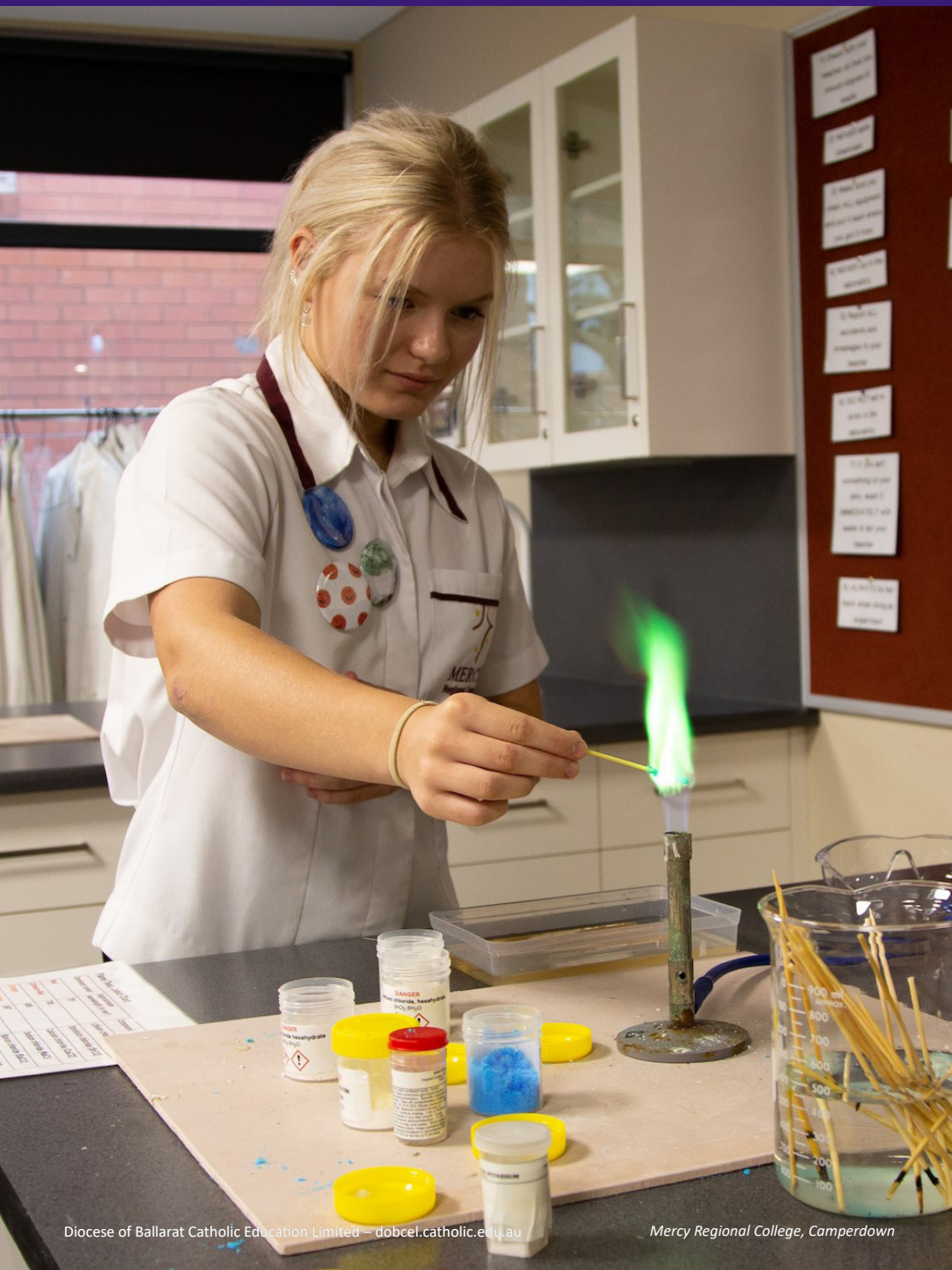
Mr Tom Sexton
Ms Megan Ioannou

Public Officer:

Mr Paul Jans

Minutes Secretary, Executive Officer and Administration Support:

Ms Kerrie Zammit



DOBCEL CONSULTATIVE COMMITTEES

CATHOLIC FAITH COMMUNITY AND CULTURE CONSULTATIVE COMMITTEE

Chair: Laura Avery

Executive Officer: Gina Bernasconi – Education Officer: Enhancing Catholic School Identity (ECSI), CEB

KEY FUNCTION

- Oversee the diocesan response to the promotion and enhancement of Catholic school identity across all school communities.

ASSURANCE AND RISK CONSULTATIVE COMMITTEE

Chair: Marita Wright

Executive Officer: Megan Ioannou – Deputy Director: Stewardship, CEB

KEY FUNCTION

- Oversee the Risk & Audit functions of DOBCEL.

FINANCE CONSULTATIVE COMMITTEE

Chair: Angela Towers – External Accountant

Executive Officer: Paul Jans – Assistant Director: Business Services, CEB

KEY FUNCTION

- Oversee the Financial functions of DOBCEL.

FAMILY AND COMMUNITY ENGAGEMENT CONSULTATIVE COMMITTEE

Chair: Anne Pekin – DOBCEL Board Director

Executive Officer: Liz McIntyre – Senior Education Officer: Wellbeing (Primary), CEB

KEY FUNCTION

- Develop strategic direction for the engagement of parents and the broader community in Catholic Education.

WELLBEING AND SAFEGUARDING CONSULTATIVE COMMITTEE

Chair: Louise Chesterfield

Executive Officer: Tony Perkins – Leader: Wellbeing, CEB

KEY FUNCTION

- Assess the provision of Wellbeing in the Ballarat Diocese and make recommendations to improve Wellbeing for students, teachers, principals and the school community.

LEARNING AND TEACHING CONSULTATIVE COMMITTEE

Chair: TBC

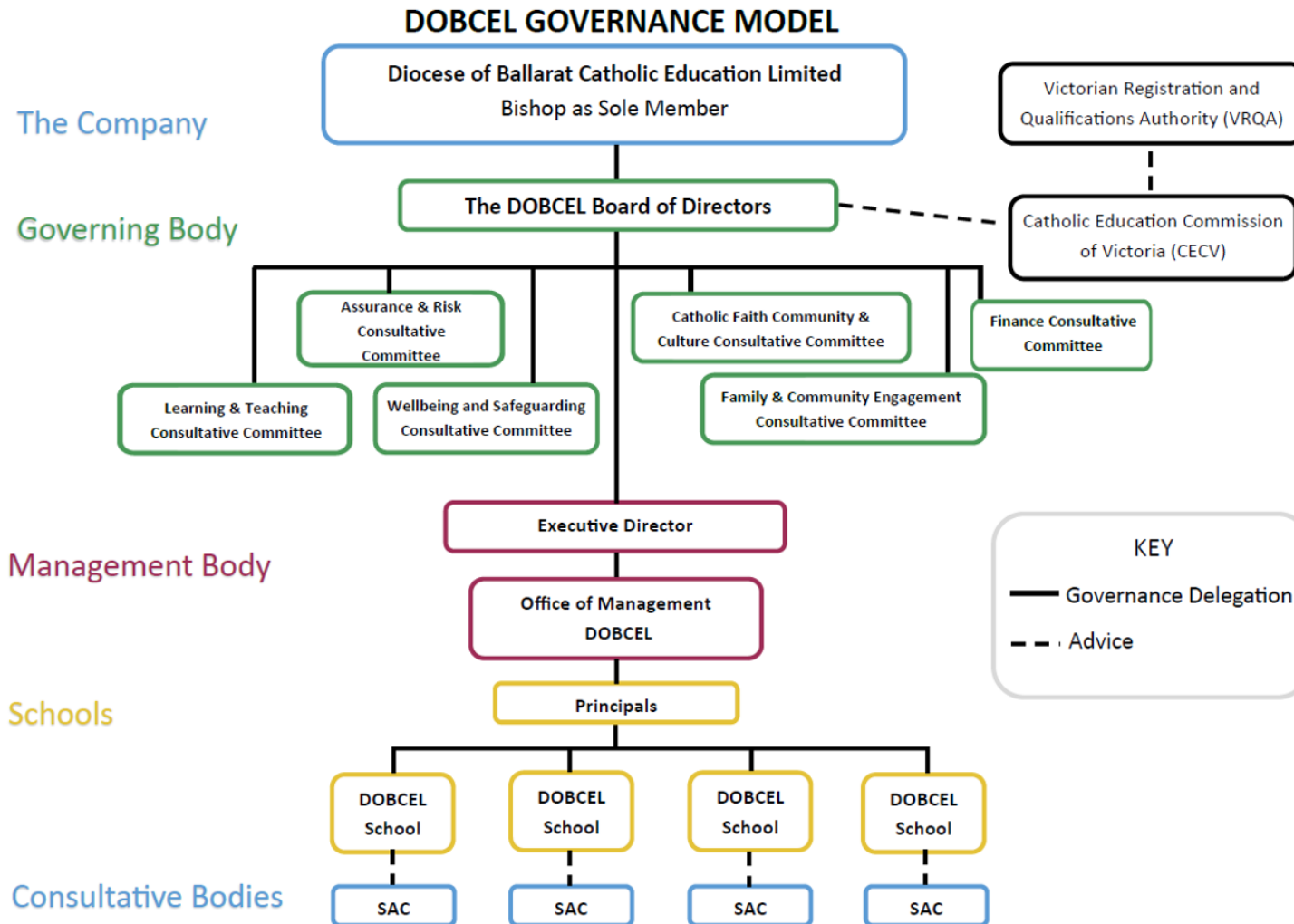
Executive Officer: Matthew Byrne – Deputy Director: Catholic Education, CEB

KEY FUNCTION

- Provide a forum where representatives of school communities and the Executive Director work together to fulfil specific governance responsibilities in the area of educational services and school improvement functions.

DOBCEL GOVERNANCE DIAGRAM

DIOCESE
OF
BALLARAT
CATHOLIC
EDUCATION
LIMITED



DOBCEL BOARD DIRECTORS



MS TRACEY O'NEILL
Board Director and Chair

E chair@dobcel.catholic.edu.au

Tracey is a lawyer and parent of former students at St Patrick's College, Ballarat and Loreto College, Ballarat. She is an outgoing member of the BDSAC and has held roles as Chair of Victorian Catholic School Parent Body, as a member of Catholic School Parents Australia and as a Director of Loreto College, Ballarat Inc.



MR TERRENCE HARNEY
Board Director and Deputy Chair

E tharney@dobcel.catholic.edu.au

Terry is a former principal of St Thomas' School Terang. Now retired, Terry brings extensive practical knowledge of the realities faced by principals and of the education ministry in rural and regional areas.



DR BERENICE KERR RSM
Board Director

E bkerr@dobcel.catholic.edu.au

Berenice came to Ballarat as the Leader of the Sisters of Mercy Community in Western Victoria. Her main ministry has been in education in secondary schools. She has also been a consultant with Catholic Education in the Diocese of Lismore, a member of the Education Committee of the Conference of Leaders of Religious Institutes, and a member of the NSW Catholic Education Commission. Currently she is involved with writing and research.



FR KEVIN MALONEY
Board Director

E kmaloney@dobcel.catholic.edu.au

Fr Kevin was ordained as a priest in 1978, and has since served in many parishes in the Diocese of Ballarat. He was appointed Director of the Diocesan Religious Education Centre in 1993, Director of Pastoral Ministry for the Diocese in 2002, Diocesan Vicar General in 2018 and Diocesan Pastoral Development Co-ordinator in 2021. Fr Kevin commenced as a DOBCEL Board Director and Deputy Chair in September 2021.



MR STEPHEN MCARDLE CA/CPA
Board Director

E smcardle@dobcel.catholic.edu.au

Stephen has practised in Ballarat as a public accountant for forty years. He is a former chair of the CEB Audit & Risk Committee and the Loreto College Ballarat Finance Committee, and is a member of the Diocesan Finance Committee.



MONSIGNOR GLYNN MURPHY OAM
Board Director

E gmurphy@dobcel.catholic.edu.au

Glynn is a priest of the Ballarat Diocese, having been ordained in 1983. He has also supported Army Chaplaincy in Reservist and full-time duties since 1986, recently completing service as Director General – Chaplaincy for the Australian Army. He is a canon lawyer, having gained his qualifications from St Paul Pontifical University, Ottawa, Canada in 1989.



MS ANNE PEKIN
Board Director

E [apekin@dobcel.catholic.edu.au](mailto:apekina@dobcel.catholic.edu.au)

Anne is a Senior Nurse working at Western District Health Services in Hamilton. Anne is an outgoing member of the BDSAC and has a son who formerly attended Monivae College, Hamilton.



DR HELEN WEADON
Board Director

E hweadon@dobcel.catholic.edu.au

Helen has extensive experience as an educator and leader in both the secondary and tertiary sectors. Helen is the Associate Dean Teaching Quality in the Federation Business School of Federation University Australia.

PARTNERSHIP NETWORKS AND TEAMS

CEB EDUCATION CONSULTANT TEAM

Lee Schlooz – Education Consultant: Central Zone (Term 1, 2022)

Murray Macdonald – Education Consultant: Northern Zone

Eugene Dalton – Education Consultant: Southern Zone (Term 1, 2022)

Tim O'Farrell – Education Consultant: Secondary

KEY FUNCTIONS

- School Improvement Framework
- Enhancing Catholic School Identity
- Performance and development culture
- Principal selection, induction and review
- School leadership support and development

PRINCIPAL NETWORKS

Chairs: **Jonathan Rowe** – Monivae College, Hamilton (Secondary)

Ethan Corfee – St Michael's Primary School, Daylesford (Central Zone)

Olga Lyons – St Patrick's Parish Primary School, Port Fairy (Southern Zone)

Vince Muscatello – St Paul's Primary School, Mildura (Northern Zone)

KEY FUNCTIONS

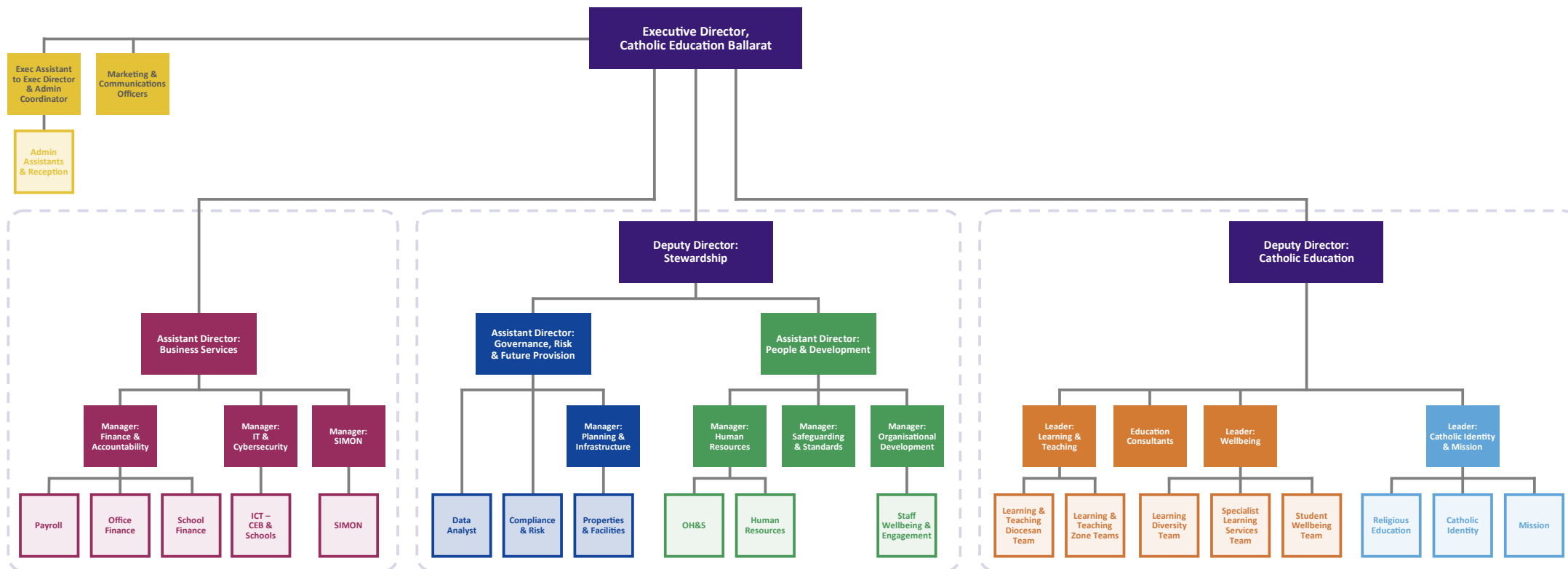
- Professional learning
- Collegial support
- Networking and partnership
- Principal wellbeing
- Dialogue with director



CEB ORGANISATIONAL STRUCTURE CHART

The role of Catholic Education Ballarat (CEB) is to provide support, service and leadership to Catholic Primary and Secondary schools in the Diocese of Ballarat. CEB seeks to engage with and influence the people who make a difference in schools. Its central purpose is to build capacity in Principals, Leaders, Teachers and Students to ensure the continuing development and growth of individuals.

CEB offices are in Ballarat, Mildura, Horsham, Swan Hill and Warrnambool (see page 2). The below Organisational Structure Chart was last updated on 2 February 2022. The full Organisational Chart (including names and roles) is available at: dobcel.catholic.edu.au/org-chart



CEB LEADERSHIP TEAM – DIRECTORATE



TOM SEXTON

Executive Director, Catholic Education Ballarat

E tsexton@dobcel.catholic.edu.au

M 0448 512 831



MATTHEW BYRNE

Deputy Director: Catholic Education

E mbyrne@dobcel.catholic.edu.au

M 0409 138 113



PAUL JANS

Assistant Director: Business Services

E pjans@dobcel.catholic.edu.au

M 0418 523 703



MEGAN IOANNOU

Deputy Director: Stewardship

E mioannou@dobcel.catholic.edu.au

M 0448 481 613



ANGE JONES

Assistant Director: People and Development

E ajones@dobcel.catholic.edu.au

M 0400 831 040

CEB LEADERSHIP TEAM



LEE SCHLOOZ
Education Consultant: Southern Zone

E lschlooz@dobcel.catholic.edu.au
M 0419 613 524



MURRAY MACDONALD
Education Consultant: Northern Zone

E murray@dobcel.catholic.edu.au
M 0419 004 254



JANET CLAASEN
Education Consultant: Mid-Northern

E jclaassen@dobcel.catholic.edu.au
M 0418 749 379



JO-ANNE BOND
Education Consultant: Central Zone

E jbond@dobcel.catholic.edu.au
M 0419 650 927



KATE LAWRY
Leader: Catholic Identity and Mission

E klawry@dobcel.catholic.edu.au
M 0428 359 854



TIM O'FARRELL
Education Consultant: Secondary

E tofarrell@dobcel.catholic.edu.au
M 0457 808 134



TONY PERKINS
Leader: Wellbeing

E tperkins@dobcel.catholic.edu.au
M 0417 007 166



JOSEPH EWING
Leader: Learning and Teaching

E jewing@dobcel.catholic.edu.au
P 03 4344 4350

CEB LEADERSHIP TEAM



MAREE BAKER
Manager: Human Resources

E mbaker@dobcel.catholic.edu.au
M 0436 460 275



KEVIN BRODIE
Manager: IT and Business Systems

E kbrodie@simonschools.net
M 0448 815 913



ANDREA WARR
Manager: Assurance & Risk

E awarr@dobcel.catholic.edu.au
M 0498 490 749



JACQUI RIGHETTI
Manager: Safeguarding and Standards

E jrighetti@dobcel.catholic.edu.au
M 0409 114 268



ASHLEY WISEMAN
Manager: Planning and Infrastructure

E awiseman@dobcel.catholic.edu.au
M 0484 819 360



DAMIAN FOSTER
Manager: IT & Cybersecurity

E dfoster@dobcel.catholic.edu.au
M 0417 527 382



FIONA MURPHY
Manager: Organisational Development

E fmurphy@dobcel.catholic.edu.au
M 0447 371 177

CEB STAFF CONTACTS – OFFICE OF THE EXECUTIVE DIRECTOR (EXEC ASSISTANT, ADMIN/RECEPTION, MARKETING/COMMS)

EXECUTIVE DIRECTOR



TOM SEXTON
Executive Director,
Catholic Education Ballarat

E execdirector@dobcel.catholic.edu.au
M 0448 512 831

ADMINISTRATION AND RECEPTION



GABRIELLE O'BRIEN
Administration Assistant
(Warrnambool)

E gobrien@dobcel.catholic.edu.au
P 03 5561 1177

MARKETING AND COMMUNICATIONS



ALEXANDER J. BRODIE
Marketing and Communications Advisor

E abrodie@dobcel.catholic.edu.au
P 03 4344 4350

EXECUTIVE ASSISTANT



KERRIE ZAMMIT
Executive Assistant to the Executive
Director and Administration Coordinator

E kzammit@dobcel.catholic.edu.au
M 0407 021 212



MAXINE POPE
Administration Assistant
(Warrnambool)

E mpope@dobcel.catholic.edu.au
P 03 5561 1177



KEVIN CUMMINS
Marketing and Communications Officer

E kcummins@dobcel.catholic.edu.au
M 0400 885 534



ELENA SILAK
Receptionist - Casual
(Ballarat)

E reception@dobcel.catholic.edu.au
M 03 4344 4350



AMBER INNES
Marketing & Communications Assistant

E ainnes@dobcel.catholic.edu.au
P 03 4344 4350

CEB STAFF CONTACTS – CATHOLIC EDUCATION (DIRECTOR, EDUCATION CONSULTANTS)

DEPUTY DIRECTOR: CATHOLIC EDUCATION



MATTHEW BYRNE
Deputy Director: Catholic Education
E mbyrne@dobcel.catholic.edu.au
M 0409 138 113

EDUCATION CONSULTANTS



JO-ANNE BOND
Education Consultant: Central Zone
E jbond@dobcel.catholic.edu.au
M 0418 749 379



MURRAY MACDONALD
Education Consultant: Northern Zone
E murray@dobcel.catholic.edu.au
M 0419 004 254

EXECUTIVE ASSISTANT



SARAH JOHNSON
Executive Assistant to the
Deputy Director: Catholic Education
E sjohnson@dobcel.catholic.edu.au
P 03 4344 4350



LEE SCHLOOZ
Education Consultant: Southern Zone
E lschlooz@dobcel.catholic.edu.au
M 0419 613 524



TIM O'FARRELL
Education Consultant: Secondary
E tofarrell@dobcel.catholic.edu.au
M 0457 808 134



JANET CLAASEN
Education Consultant: Mid-Northern
E jclaassen@dobcel.catholic.edu.au
M 0418 749 379

CEB STAFF CONTACTS – CATHOLIC IDENTITY AND MISSION

LEADER: CATHOLIC IDENTITY AND MISSION



KATE LAWRY
Leader: Catholic Identity and Mission

E klawry@dobcel.catholic.edu.au
M 0428 359 854

RELIGIOUS EDUCATION



KIM HAWKES
Education Officer: Religious Education

E khawkes@dobcel.catholic.edu.au
M 0497 603 165



BERNADETTE LUCKMAN
Education Officer: Religious Education

E bluckman@dobcel.catholic.edu.au
M 0492 324 761

CATHOLIC IDENTITY



GINA BERNASCONI
Education Officer:
Enhancing Catholic School Identity (ECSI)

E gbernasconi@dobcel.catholic.edu.au
M 0438 523 530



BERNADETTE TOLAN
Education Officer: Religious Education
(Secondary)

E btolan@dobcel.catholic.edu.au
P 0484 828 611



JUSTIN MCINERNEY
Education Officer: Religious Education

E jmcinerney@dobcel.catholic.edu.au
P 03 4344 4350

MISSION



JIM WAIGHT
Education Officer: Formation for Mission

E jwaight@dobcel.catholic.edu.au
M 0417 869 912



JO-ANNE VAN DER VOORT
Education Officer: Religious Education

E jvandervoort@dobcel.catholic.edu.au
P 0437 353 423

CEB STAFF CONTACTS – EDUCATION SERVICES (LEARNING AND TEACHING ZONE TEAM)

LEADER: LEARNING AND TEACHING



JOSEPH EWING
Leader: Learning and Teaching

E jewing@dobcel.catholic.edu.au
P 03 4344 4350

LEARNING AND TEACHING ZONE TEAM



SAMANTHA MEERBACH
Senior Education Officer:
Learning and Teaching
(Central and Northern Zones)

E smeerbach@dobcel.catholic.edu.au
M 0417 511 118



JULIE COOPER
Education Officer: Learning and Teaching
(Central and Northern Zones)

E jcooper@dobcel.catholic.edu.au
P 03 4344 4350



TERESA HADDEN
Education Officer: Learning and Teaching
(Southern Zone)

E thadden@dobcel.catholic.edu.au
M 0408 652 128



SHAY KING
Education Officer: Learning and Teaching
(Central and Northern Zones)

E sking@dobcel.catholic.edu.au
P 03 4344 4350



MEL WILLIS
Education Officer: Learning and Teaching
(Southern Zone)

E mwillis@dobcel.catholic.edu.au
M 0407 460 083

CEB STAFF CONTACTS – EDUCATION SERVICES (LEARNING AND TEACHING DIOCESAN TEAM)

LEARNING AND TEACHING DIOCESAN TEAM



KEVIN CUMMINS

Education Officer: HIVE/Canvas

E kcummins@dobcel.catholic.edu.au

M 0400 885 534



MEAGAN BECKER

Education Officer: English as
an Additional Language (EAL)

E mbecker@dobcel.catholic.edu.au

M 0416 232 696



HELEN BETTES

Education Officer: Learning and Teaching
– Reading Recovery

E hbettes@dobcel.catholic.edu.au

M 0400 195 647



JULIA PETROV

Education Officer:
Secondary Learning and Teaching

E jpetrov@dobcel.catholic.edu.au

P 03 4344 4350



LAUREN GOULD

Education Officer: Languages

E lgould@dobcel.catholic.edu.au

M 0417 500 528



JEANETTE MORRIS

Education Officer: Aboriginal and
Torres Strait Islander Education

E jmorris@dobcel.catholic.edu.au

M 0408 360 098



CARMEL CLARKE

Education Officer:
Applied and Vocational Learning

E cclarke@dobcel.catholic.edu.au

M 0419 534 355



BREEANA WADE

Education Officer: Learning and Teaching
– Digital Solutions

E bwade@dobcel.catholic.edu.au

P 03 4344 4350

CEB STAFF CONTACTS – EDUCATION SERVICES (WELLBEING – STUDENT WELLBEING TEAM)

LEADER: WELLBEING



TONY PERKINS
Leader: Wellbeing

E tperkins@dobcel.catholic.edu.au
M 0417 007 166

STUDENT WELLBEING TEAM



LIZ MCINTYRE
Senior Education Officer:
Wellbeing (Primary)

E lmcintyre@dobcel.catholic.edu.au
M 0417 498 902



BROOKE NESTER
Education Officer: Wellbeing (Secondary)

E bnester@dobcel.catholic.edu.au
M 0447 946 223



ANNE RUDELL
Education Officer: SWPBS

E aruddell@dobcel.catholic.edu.au
M 0409 107 956

CEB STAFF CONTACTS – EDUCATION SERVICES (WELLBEING – LEARNING DIVERSITY TEAM)

LEARNING DIVERSITY TEAM



SUSAN RAMPLING
Senior Education Officer:
Learning Diversity

E srampling@dobcel.catholic.edu.au
M 0418 173 543



MONIQUE RYAN
Education Officer: Learning Diversity
(Northern Zone)

E monryan@dobcel.catholic.edu.au
M 0409 341 252



KATE SADLER
Education Officer: Learning Diversity
(Southern Zone)

E ksadler@dobcel.catholic.edu.au
M 0417 885 283



LISA TEMPLAR
Education Officer: Learning Diversity
(Central Zone)

E ltemplar@dobcel.catholic.edu.au
M 0488 323 833



WENDY MORLEY
Learning Diversity: Sensory Impairments
(Central Zone)

E wmorley@dobcel.catholic.edu.au
P 0431 360 074



LEONIE WALSH
Learning Diversity: Sensory Impairments
(Northern Zone)

E lwalsh@dobcel.catholic.edu.au
M 0419 714 539



NICOLE JENKINS
Learning Diversity: Learning Diversity
(Central Zone)

E njenkins@dobcel.catholic.edu.au
M 0437 867 095



KELLY PAILS
Learning Diversity: Sensory Impairments
(Central Zone)

E kpails@dobcel.catholic.edu.au
M 0409 527 251

CHERYL O'DWYER
Visiting Teachers: Sensory Impairments
(Southern Zone)

E codwyer@dobcel.catholic.edu.au
P 03 4344 4350

JACQUI PIERCE
Education Officer: Learning Diversity
(Secondment)

E jpierce@dobcel.catholic.edu.au
P 03 4344 4350

MARIA RICHARDS
Education Officer: Learning Diversity
(Mid North)

E mrichards@dobcel.catholic.edu.au
P 03 4344 4350

SPECIALIST LEARNING SERVICES TEAM



ALLAN HUTCHISON
Senior Psychologist

E ahutchison@dobcel.catholic.edu.au
M 0408 369 586



TEGAN BELL
Psychologist (Central Zone)

E tbell@dobcel.catholic.edu.au
M 0408 369 487



DANIELLE BUZAGLO
Psychologist (Southern Zone)

E dbuzaglo@dobcel.catholic.edu.au
M 0419 138 916



PATRICE RICKARD
Psychologist (Northern Zone)

E prickard@dobcel.catholic.edu.au
M 0448 730 163



JANETTE TRENTO
Psychologist (Central Zone)

E jtrento@dobcel.catholic.edu.au
M 0499 315 825



CARMEN JEWELL
Psychologist (Northern Zone)

E cjewell@dobcel.catholic.edu.au
M 0484 641 997

SPECIALIST LEARNING SERVICES TEAM



ROBYN CRANAGE
Senior Speech Pathologist

E rcranage@dobcel.catholic.edu.au
M 0438 564 036



SALLY ANDERSON
Speech Pathologist (Northern Zone)

E sanderson@dobcel.catholic.edu.au
0.2 EFT School Placement at St Mary's Catholic
Primary School, Warracknabeal



ASHLEIGH FRECKLETON
Speech Pathologist
(Northern and Southern Zones)

E afreckleton@dobcel.catholic.edu.au
M 0457 794 331



REBECCA FREE
Speech Pathologist (Southern Zone)

E rfree@dobcel.catholic.edu.au
M 0408 362 585



CHELSEA HARRIS
Speech Pathologist (Northern Zone)

E charris@dobcel.catholic.edu.au
M 0438 537 512



MIRANDA PEARSE
Speech Pathologist (Central Zone)

E mpearse@dobcel.catholic.edu.au
M 0466 309 000

CEB STAFF CONTACTS – BUSINESS SERVICES (DIRECTOR, COMPLIANCE/RISK, PLANNING/INFRASTRUCTURE)

DEPUTY DIRECTOR: STEWARDSHIP



MEGAN IOANNOU

Deputy Director: Stewardship

E mioannou@dobcel.catholic.edu.au

M 0448 481 613

MANAGER: ASSURANCE & RISK



ANDREA WARR

Manager: Assurance & Risk

E awarr@dobcel.catholic.edu.au

M 0498 490 749

MANAGER: PLANNING AND INFRASTRUCTURE



ASHLEY WISEMAN

Manager: Planning and Infrastructure

E awiseman@dobcel.catholic.edu.au

M 0484 819 360

EXECUTIVE ASSISTANT

JO MCKEE

**Executive Assistant to
Deputy Director: Stewardship**

E jmckee@dobcel.catholic.edu.au

P 03 4344 4350

COMPLIANCE AND RISK



SIMON O'BRIEN

Compliance and Risk Advisor

E sobrien@dobcel.catholic.edu.au

M 0421 000 325

PROPERTIES AND FACILITIES



PENELOPE IRISH

Property and Facilities Advisor

E pirish@dobcel.catholic.edu.au

M 0429 473 351



SUSAN CROWE

**Education Officer:
Improvement and Compliance**

E scrowe@dobcel.catholic.edu.au

M 0419 887 274

PAUL BROWN

Compliance and Risk Support Officer

E pbrown@dobcel.catholic.edu.au

M

VICKY HODGSON

Compliance and Risk Support Officer

E vhodgson@dobcel.catholic.edu.au

M

CEB STAFF CONTACTS – PEOPLE AND DEVELOPMENT (DIRECTOR, HUMAN RESOURCES, OHS, SAFEGUARDING/STANDARDS)

ASSISTANT DIRECTOR: PEOPLE & DEVELOPMENT



ANGE JONES
Assistant Director:
People and Development
E ajones@dobcel.catholic.edu.au
M 0400 831 040

HUMAN RESOURCES



MAREE BAKER
Manager: Human Resources
E mbaker@dobcel.catholic.edu.au
M 0436 460 275

SAFEGUARDING AND STANDARDS



JACQUI RIGHETTI
Manager: Safeguarding and Standards
E jrighetti@dobcel.catholic.edu.au
M 0409 114 268



JO HUNTLEY
Human Resources Advisor
E jhuntley@dobcel.catholic.edu.au
P 0429 598 163

ORGANISATIONAL DEVELOPMENT



FIONA MURPHY
Manager: Organisational Development
E fmurphy@dobcel.catholic.edu.au
M 0447 371 177



LEAH CROUGH
Occupational Health
and Safety Coordinator
E lcrough@dobcel.catholic.edu.au
M 0419 687 893



TANIA LUND
Staff Wellbeing & Engagement
E tlund@dobcel.catholic.edu.au
M 0492 235 140

CEB STAFF CONTACTS – BUSINESS SERVICES (DIRECTOR, FINANCE/ACCOUNTABILITY, ICT)

ASSISTANT DIRECTOR: BUSINESS SERVICES



PAUL JANS
Assistant Director: Business Services

E pjans@dobcel.catholic.edu.au
M 0418 523 703

OFFICE FINANCE



DONNA MASON
Assistant Manager: Finance

E dmason@dobcel.catholic.edu.au
P 03 4344 4350



MICHELLE LEONARD
Finance Officer

E mleonard@dobcel.catholic.edu.au
P 03 4344 4350

Finance and Fleet Officer

E @dobcel.catholic.edu.au
P 03 4344 4350

SCHOOL FINANCE



MATT MACDONALD
Business Manager

E mmacdonald@dobcel.catholic.edu.au
M 0447 366 722



DEAN PIDGEON
Business Manager

E dpidgeon@dobcel.catholic.edu.au
M 0419 363 889



JORDAN SMITH
Financial Accountant

E jsmith@dobcel.catholic.edu.au
P 03 4344 4350

CEB STAFF CONTACTS – BUSINESS SERVICES (DIRECTOR, FINANCE/ACCOUNTABILITY, ICT)

ICT – CEB AND SCHOOLS



DAMIAN FOSTER
Manager: IT & Cybersecurity

E dfoster@dobcel.catholic.edu.au
M 0417 527 382



NOEL LINAYAO
ICT Systems Administrator
& ICT Support Officer

E nlinayao@dobcel.catholic.edu.au
P 03 4344 4350



CHINMAYI ALTURI
ICT Systems Administrator
& ICT Support Officer

E calturi@dobcel.catholic.edu.au
P 03 4344 4350

PAYROLL



CHRIS YOUNG
Leader: Payroll Team

E cyoung@dobcel.catholic.edu.au
P 03 4344 4350



PAM MARTIN
Payroll Administration Officer

E pmartin@dobcel.catholic.edu.au
P 03 4344 4350



DORIS MILESEVIC
Payroll Officer

E dmilesevic@dobcel.catholic.edu.au
P 03 4344 4350



SUSAN KERN
Payroll Officer

E skern@dobcel.catholic.edu.au
P 03 4344 4350



EMILY DELVES
Payroll Officer

E edelves@dobcel.catholic.edu.au
P 03 4344 4350



MADI WALLIS
Payroll Officer

E mwallis@dobcel.catholic.edu.au
P 03 4344 4350

TRISH FORREST
Payroll Officer

E tforrest@dobcel.catholic.edu.au
P 03 4344 4350

CEB STAFF CONTACTS – BUSINESS SERVICES (SIMON)

simon



KEVIN BRODIE
General Manager

E kbrodie@simonschools.net
M 0448 815 913



MARK VANDERKLEY
Head of Software Development

E mvanderkley@simonschools.net
P 03 4344 4350



ANDREW WEIR
Customer Relations and
Support Manager

E aweir@simonschools.net
M 0400 526 641



DANNY GRUBER
Business & Partner Consultant

E dgruber@simonschools.net
M 0448 815 913



SCOTT ESSERY
Software Developer

E sessery@simonschools.net
P 03 4344 4350



TAMARA ESSERY
Administration and Support Analyst

E tessery@simonschools.net
P 03 4344 4350



STEVEN HUF
Software Developer

E shuf@simonschools.net
P 03 4344 4350



SUSHANT THAPA
Software Developer

E sthapa@simonschools.net
P 03 4344 4350



STEPHANIE PORTER
Primary School Consultant and
Support Analyst

E sporter@simonschools.net
P 03 4344 4350



RORY WALSH
Software Developer

E rwalsh@simonschools.net
P 03 4344 3450



SHRADDHA KHATIWADA
Software Developer

E skhatiwada@simonschools.net
P 03 4344 4350



TIM WILSON
Systems Lead and Support Analyst

E twilson@simonschools.net
P 03 4344 4350



KANISHKA HITIHAMILLAGE
Software Developer

E khithamillage@simonschools.net
M 03 4344 3450



MATT GRACE
Support Analyst

E mgrace@simonschools.net
P 03 4344 4350



BEN BARKER
Software Developer

E bbarker@simonschools.net
P 03 4344 4350

SCHOOL CONTACTS



The Diocese of Ballarat is divided into the Northern, Southern and Central zones and consists of a wide range of schools from smaller rural settings to larger regional centres. Over 18,000 students are enrolled in 52 Primary Schools, 1 Foundation to Year 8 School, and 11 Secondary Schools. The Diocese covers the Murray River in the north to the Southern Ocean in the south.

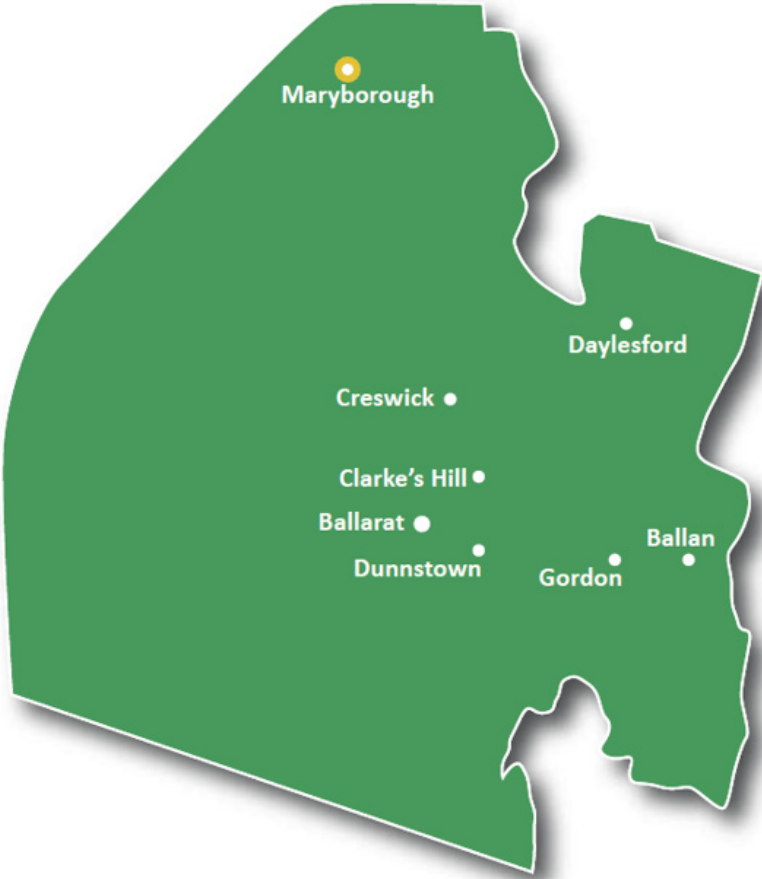


SCHOOL CONTACTS – CENTRAL ZONE



CENTRAL ZONE LOCATIONS

- Ballan
- Ballarat
- Clarke's Hill
- Creswick
- Daylesford
- Dunnstown
- Gordon
- Maryborough



SCHOOL CONTACTS – CENTRAL ZONE

SCHOOL AND LOCALITY	PRINCIPAL	ADMIN SUPPORT	CONTACT DETAILS	POSTAL ADDRESS	GOV AUTHORITY	PARISH PRIEST	E #
PRIMARY SCHOOLS							
ALFREDTON ST THOMAS MORE SCHOOL Cuthberts Rd	Simon Duffy	Renee Whitefield Fran Dunn Donna Simpson	P 03 5334 2244 E principal@stmalfredton.catholic.edu.au W www.stmalfredton.catholic.edu.au	PO Box 230W Ballarat West VIC 3350	DOBCEL	Rev Ed Moloney	E2068
BALLAN ST BRIGID'S PRIMARY SCHOOL 98 Inglis St	Jayne Bosworth	Jodie Mullane <i>Finance Officer:</i> Tracey Speakman	P 03 5368 1015 E principal@sbballan.catholic.edu.au W www.sbballan.catholic.edu.au	98 Inglis St Ballan VIC 3342	DOBCEL	Rev Justin Driscoll	E2009
BALLARAT ST PATRICK'S PARISH PRIMARY SCHOOL 119 Drummond St	Ben Shields	Michelle Cushing	P 03 5332 7680 E principal@spballarat.catholic.edu.au W www.spballarat.catholic.edu.au	PO Box 82W Ballarat West VIC 3350	DOBCEL	Rev Ed Moloney	E2002
BALLARAT EAST ST ALIPIUS PARISH SCHOOL 106-108 Victoria St	Emily Clarke	Lauren Morris	P 03 5331 1816 E principal@saballarat.catholic.edu.au W www.saballarat.catholic.edu.au	106-108 Victoria St Ballarat East VIC 3350	DOBCEL	Rev Jorge De Chavez OSJ	E2003
BALLARAT EAST ST FRANCIS XAVIER PRIMARY SCHOOL 100 Fortune St	Mark Hogbin	Gabrielle McKinnis Maureen McLean Majella Muller	P 03 5331 6311 E principal@sfxballarat.catholic.edu.au W www.sfxballarat.catholic.edu.au	PO Box 2027 Ballarat Mail Centre Ballarat East VIC 3354	DOBCEL	Rev Jorge De Chavez OSJ	E2039
BALLARAT NORTH ST COLUMBA'S SCHOOL 306 Howard St	Bambi Afford Shaun Mohr	Kathy Haintz Cathy Coffey <i>Business Manager:</i> Emma Busuttil	P 03 5332 4894 E principal@scballarat.catholic.edu.au W www.scballarat.catholic.edu.au	306 Howard St Soldiers Hill VIC 3350	DOBCEL	Rev Marcello Colasante	E2038
CLARKE'S HILL ST MARY'S PRIMARY SCHOOL 131 Powells Rd	Inez French	Leonie Wray Majella Muller	P 03 5334 5280 E principal@smclarkeshill.catholic.edu.au W www.smclarkeshill.catholic.edu.au	131 Powells Rd Clarke's Hill VIC 3352	DOBCEL	Rev Sajan Mathew	E2048
CRESWICK ST AUGUSTINE'S PARISH PRIMARY SCHOOL 119 Napier St	Terry Brennan	Mandy Simpson	P 03 5345 2106 E principal@sacreswick.catholic.edu.au W www.sacreswick.catholic.edu.au	PO Box 413 Creswick VIC 3363	DOBCEL	Rev Justin Driscoll	E2012
DAYLESFORD ST MICHAEL'S PRIMARY SCHOOL 29 Smith St	Tim Hogan	Leah Monaghan	P 03 5348 1261 E principal@smdaylesford.catholic.edu.au W www.smdaylesford.catholic.edu.au	PO Box 561 Daylesford VIC 3460	DOBCEL	Rev Justin Driscoll	E2076
DELACOMBE LUMEN CHRISTI PRIMARY SCHOOL 111 Whitelaw Ave	Carmel Hanley	Bernadette Martin Christine Smale	P 03 5336 2015 E principal@lcdelacombe.catholic.edu.au W www.lcdelacombe.catholic.edu.au	111 Whitelaw Ave Delacombe VIC 3356	DOBCEL	Rev Eugene McKinnon	E2073
DUNNSTOWN ST BRENDAN'S PRIMARY SCHOOL 1 Ti Tree Rd	Inez French	Anita Lidgett	P 03 5334 7604 E principal@sbdunnstown.catholic.edu.au W www.sbdunnstown.catholic.edu.au	1 Ti Tree Rd Dunnstown VIC 3352	DOBCEL	Rev Sajan Mathew	E2013

SCHOOL CONTACTS – CENTRAL ZONE

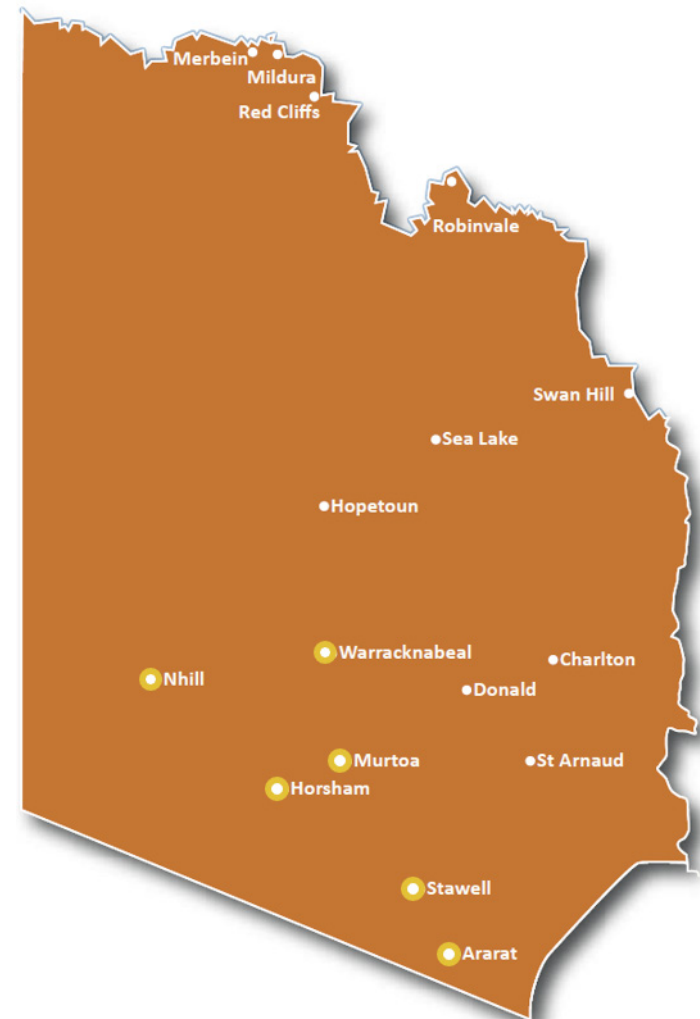
SCHOOL AND LOCALITY	PRINCIPAL	ADMIN SUPPORT	CONTACT DETAILS	POSTAL ADDRESS	GOV AUTHORITY	PARISH PRIEST	E #
PRIMARY SCHOOLS							
GORDON ST PATRICK'S SCHOOL 1564 Old Melbourne Rd	Paul McDowell	Julie Toohey	P 03 5368 9495 E principal@spgordon.catholic.edu.au W www.spgordon.catholic.edu.au	1564 Old Melbourne Rd Gordon VIC 3345	DOBCEL	Rev Justin Driscoll	E2010
LUCAS SIENA CATHOLIC PRIMARY SCHOOL 150 Eleanor Dve	Chris Kavanagh	Gen Willmott Cass Klain	P 03 5334 3096 E principal@slucas.catholic.edu.au W www.slucas.catholic.edu.au	PO Box 4213 Alfredton VIC 3350	DOBCEL	Rev Ed Moloney	E2079
MARYBOROUGH ST AUGUSTINE'S PRIMARY SCHOOL 58 Burke St	Sonia Turner	Anne Mangan Amber O'Kearney Celia Jardine	P 03 5460 4440 E principal@samaryborough.catholic.edu.au W www.samaryborough.catholic.edu.au	58 Burke St Maryborough VIC 3465	DOBCEL	Rev John Monaghan	E2006
MOUNT CLEAR EMMAUS CATHOLIC PRIMARY SCHOOL 1503 Geelong Rd	Ethan Corfee	Emma Mumford	P 03 5330 2266 E principal@emtclear.catholic.edu.au W www.emtclear.catholic.edu.au	PO Box 41 Mount Clear VIC 3350	DOBCEL	Rev Jorge De Chavez OSJ	E2078
REDAN ST ALOYSIUS PRIMARY SCHOOL 800 Ripon St South	Narelle Cox	Robert Rosenow Lesley Brown	P 03 5335 8177 E principal@saredan.catholic.edu.au W www.saredan.catholic.edu.au	PO Box 48R Redan VIC 3350	DOBCEL	Rev Eugene McKinnon	E2007
SEBASTOPOL ST JAMES' PRIMARY SCHOOL 260 Albert St	Peter Fahey Garth Kydd	Lisa Dixon Melissa Miller	P 03 5335 8750 E principal@ssebastopol.catholic.edu.au W www.ssebastopol.catholic.edu.au	260 Albert St Sebastopol VIC 3356	DOBCEL	Rev Eugene McKinnon	E2057
WENDOUREE OUR LADY HELP OF CHRISTIANS SCHOOL 480A Gillies St	Leigh Bradshaw	Lisa McKenzie Karen Bell	P 03 5339 4726 E principal@olhcwendouree.catholic.edu.au W www.olhcwendouree.catholic.edu.au	480A Gillies St Wendouree VIC 3355	DOBCEL	Rev Marcello Colasante	E2064
SECONDARY SCHOOLS							
BALLARAT LORETO COLLEGE 1600 Sturt St	Michelle Brodrick	Stephanie Crawford <i>Business Manager:</i> Brenton Riordan	P 03 5329 6100 E principal@loreto.vic.edu.au W www.loreto.vic.edu.au	1600 Sturt St Ballarat VIC 3350	Loreto Ministries Ltd	Rev Ed Moloney	E2005
BALLARAT ST PATRICK'S COLLEGE 1431 Sturt St	Steven O'Connor	Andrew Ballesty Jo McKee <i>Business Manager:</i> Andrew Ballesty	P 03 5331 1688 E principal@stpats.vic.edu.au W www.stpats.vic.edu.au	Locked Bag 31 Ballarat VIC 3350	Edmund Rice Education Aust	Rev Ed Moloney	E2001
MOUNT CLEAR DAMASCUS COLLEGE 1412 Geelong Rd	Steven Mifsud	Tina Munro <i>Business Manager:</i> Justin Marson	P 03 5337 2222 E principal@damascus.vic.edu.au W www.damascus.vic.edu.au	1412 Geelong Rd Mount Clear VIC 3350	DOBCEL	Rev Jorge De Chavez OSJ	E2075

SCHOOL CONTACTS – NORTHERN ZONE



NORTHERN ZONE LOCATIONS

- Ararat
- Charlton
- Donald
- Hopetoun
- Horsham
- Merbein
- Mildura
- Murtoa
- Nhill
- Red Cliffs
- Robinvale
- Sea Lake
- St Arnaud
- Stawell
- Swan Hill
- Warracknabeal

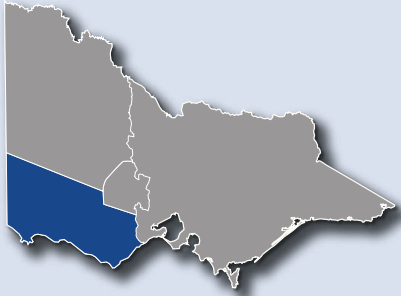


SCHOOL CONTACTS – NORTHERN ZONE

SCHOOL AND LOCALITY	PRINCIPAL	ADMIN SUPPORT	CONTACT DETAILS	POSTAL ADDRESS	GOV AUTHORITY	PARISH PRIEST	E #
PRIMARY SCHOOLS							
ARARAT ST MARY'S PARISH PRIMARY SCHOOL Moore St	Roxanne Leed	Jane Pola Jess Praag	P 03 5352 1796 E principal@smararat.catholic.edu.au W www.smararat.catholic.edu.au	PO Box 329 Ararat VIC 3377	DOBCEL	Rev Andrew Hayes	E2028
CHARLTON ST JOSEPH'S CATHOLIC SCHOOL 25 Watson St	Mary Hogan	Cate Olive	P 03 5491 1343 E principal@sjcharlton.catholic.edu.au W www.sjcharlton.catholic.edu.au	PO Box 116 Charlton VIC 3525	DOBCEL	Rev Gerard Prunty	E2018
DONALD ST MARY'S PRIMARY SCHOOL 134 Woods St	Melissa Drum	Maree Hughes	P 03 5497 1116 E principal@smdonald.catholic.edu.au W www.smdonald.catholic.edu.au	134 Woods St Donald VIC 3480	DOBCEL	Rev Gerard Prunty	E2008
HOPETOUN ST JOSEPH'S CATHOLIC PRIMARY SCHOOL 33 Lascelles St	Cynthia Maiden	Julie Grace	P 03 5083 3296 E principal@sjhopetoun.catholic.edu.au W www.sjhopetoun.catholic.edu.au	PO Box 186 Hopetoun VIC 3396	DOBCEL	Monsignor Glynn Murphy	E2055
HORSHAM SS MICHAEL AND JOHN'S PRIMARY SCHOOL 7 McLachlan St	Andrea Cox	Jane Overman Anna Carberry	P 03 5382 3000 E principal@smjhorsham.catholic.edu.au W www.smjhorsham.catholic.edu.au	7 McLachlan St Horsham VIC 3400	DOBCEL	Monsignor Glynn Murphy	E2023
MERBEIN OUR LADY OF THE SACRED HEART PRIMARY SCHOOL 18 Box St	Narelle Gallagher	Carolyn Clementson Mia Mottram	P 03 5025 2258 E principal@olshmerbein.catholic.edu.au W www.olshmerbein.catholic.edu.au	PO Box 416 Merbein VIC 3505	DOBCEL	Rev Matthew Thomas	E2046
MILDURA SACRED HEART PRIMARY SCHOOL 168 Twelfth St	Mark Gibson	Mary Avery Bernadette Avery	P 03 5023 1204 E principal@shmildura.catholic.edu.au W www.shmildura.catholic.edu.au	PO Box 5056 Mildura VIC 3500	DOBCEL	Rev Matthew Thomas	E2058
MILDURA ST PAUL'S PRIMARY SCHOOL 716 Fourteenth St	Vince Muscatello	Kathryn Byrnes Loretta Audino	P 03 5023 4567 E principal@spmildura.catholic.edu.au W www.spmildura.catholic.edu.au	PO Box 4004 Mildura VIC 3500	DOBCEL	Rev Matthew Thomas	E2066
MURTOA OUR LADY HELP OF CHRISTIANS SCHOOL 15 Munro St	Catherine Grace	Joan Lane-Storey	P 03 5385 2526 E principal@olhcmurtoa.catholic.edu.au W www.olhcmurtoa.catholic.edu.au	PO Box 92 Murtoa VIC 3390	DOBCEL	Monsignor Glynn Murphy	E2063
NHILL ST PATRICK'S PRIMARY SCHOOL 29 Leahy St	Kingsley Dalglish	Karen Rintoule Ann Munro	P 03 5391 1575 E principal@spnhill.catholic.edu.au W www.spnhill.catholic.edu.au	PO Box 169 Nhill VIC 3418	DOBCEL	Monsignor Glynn Murphy	E2050
RED CLIFFS ST JOSEPH'S PRIMARY SCHOOL 17 Fitzroy Ave	Naomi Kennedy	Trish Forrest	P 03 5024 1654 E principal@sjredcliffs.catholic.edu.au W www.sjredcliffs.catholic.edu.au	17 Fitzroy Ave Red Cliffs VIC 3496	DOBCEL	Rev Matthew Thomas	E2047

SCHOOL CONTACTS – NORTHERN ZONE

SCHOOL AND LOCALITY	PRINCIPAL	ADMIN SUPPORT	CONTACT DETAILS	POSTAL ADDRESS	GOV AUTHORITY	PARISH PRIEST	E #
PRIMARY SCHOOLS							
ROBINVALE ST MARY'S F-8 SCHOOL 12 Watkin St	Andrea Welsh	Lisa Zappia Gabriella Cardin	P 03 5026 3483 E principal@smrobinvale.catholic.edu.au W www.smrobinvale.catholic.edu.au	12 Watkin St Robinvale VIC 3549	DOBCEL	Rev Anthony Nagothu	E2060
SEA LAKE ST MARY'S CATHOLIC PRIMARY SCHOOL 47 Hannon St	Kate Nunn	Alison McClelland Jane Stacey	P 03 5070 1272 E principal@smsealake.catholic.edu.au W www.smsealake.catholic.edu.au	47 Hannon St Sea Lake VIC 3533	DOBCEL	Rev James Kerr	E2059
ST ARNAUD ST PATRICK'S PRIMARY SCHOOL 5 Wattle St	Trinity Johns	Sharon Cole Katrina Cheeseman	P 03 5495 1038 E principal@spstarnaud.catholic.edu.au W www.spstarnaud.catholic.edu.au	PO Box 247 St Arnaud VIC 3478	DOBCEL	Rev Gerard Prunty	E2015
STAWELL ST PATRICK'S CATHOLIC PRIMARY SCHOOL 55 Patrick St	Chris McAloon	Anna Wadge	P 03 5358 2493 E principal@spstawell.catholic.edu.au W www.spstawell.catholic.edu.au	PO Box 856 Stawell VIC 3380	DOBCEL	Rev Andrew Hayes	E2036
SWAN HILL ST MARY'S PRIMARY SCHOOL 2 Murlong St	Kate Quin	Maree McLean	P 03 5033 2541 E principal@smswanhill.catholic.edu.au W www.smswanhill.catholic.edu.au	PO Box 727 Swan Hill VIC 3585	DOBCEL	Rev James Kerr	E2040
WARRACKNABEAL ST MARY'S CATHOLIC PRIMARY SCHOOL 2-8 Campbell St	Nerrida Holland	Paula Winsall	P 03 5398 2001 E principal@smwarracknabeal.catholic.edu.au W www.smwarracknabeal.catholic.edu.au	PO Box 283 Warracknabeal VIC 3393	DOBCEL	Monsignor Glynn Murphy	E2027
SECONDARY SCHOOLS							
ARARAT MARIAN COLLEGE 304 Barkly St	Carmel Barker	Jane Kolotelo Samantha Whitelaw <i>Business Manager:</i> John Purcell	P 03 5352 3861 E principal@mcaratat.catholic.edu.au W www.mcararat.catholic.edu.au	PO Box 314 Ararat VIC 3377	Kildare Education Ministries	Rev Andrew Hayes	E2020
HORSHAM ST BRIGID'S COLLEGE 97 Robinson St	Gerard Raven	Sharon Fedke <i>Business Manager:</i> Tony Nield	P 03 5382 3545 E principal@stbc.vic.edu.au W www.stbc.vic.edu.au	PO Box 542 Horsham VIC 3545	DOBCEL	Monsignor Glynn Murphy	E2044
MILDURA ST JOSEPH'S COLLEGE 154 Twelfth St	Marg Blythman	Danielle McGlashan Hannah Files-Burke <i>Business Manager:</i> David Lim	P 03 5018 8000 E principal@sjcmda.vic.edu.au W www.sjcmda.vic.edu.au	154 Twelfth St Mildura VIC 3500	Mercy Education Ltd	Rev Matthew Thomas	E2016
SWAN HILL ST MARY MACKILLIP COLLEGE 53 McCrae St	Michelle Haeusler	Emma Webb <i>Business Manager:</i> David Rush	P 03 5032 9771 E principal@mackillopsh.vic.edu.au W www.smmc.vic.edu.au	PO Box 971 Swan Hill VIC 3585	DOBCEL	Rev James Kerr	E2070



SOUTHERN ZONE LOCATIONS

- Camperdown
- Casterton
- Coleraine
- Colac
- Coragulac
- Dennington
- Edenhope
- Hamilton
- Koroit
- Mortlake
- Penshurst
- Port Fairy
- Portland
- Terang
- Warrnambool



SCHOOL CONTACTS – SOUTHERN ZONE

SCHOOL AND LOCALITY	PRINCIPAL	ADMIN SUPPORT	CONTACT DETAILS	POSTAL ADDRESS	GOV AUTHORITY	PARISH PRIEST	E #
PRIMARY SCHOOLS							
CAMPERDOWN ST PATRICK'S SCHOOL 4 Dimora Ave	Tim Bourke (Interim)	Debbie Cheslett	P 03 5593 1962 E principal@spcamperdown.catholic.edu.au W www.spcamperdown.catholic.edu.au	4 Dimora Ave Camperdown VIC 3260	DOBCEL	Rev Neville Stanislaus	E2034
CASTERTON SACRED HEART PRIMARY SCHOOL 39 Robertson St	Suzie McManus	Prue Adey	P 03 5581 1131 E principal@shcasterton.catholic.edu.au W www.shcasterton.catholic.edu.au	39 Robertson St Casterton VIC 3311	DOBCEL	Rev Patrick Mugavin & Rev George Kuruvila	E2021
COLAC SACRED HEART PRIMARY SCHOOL 125 Hart St	Jack Lenaghan	Emmalie Cain Rhonda Miraglia Rochelle Seuren	P 03 5231 5292 E principal@shcolac.catholic.edu.au W www.shcolac.catholic.edu.au	PO Box 221 Colac VIC 3250	DOBCEL	Rev Michael O'Toole	E2062
COLAC ST MARY'S CATHOLIC PRIMARY SCHOOL 15-27 Calvert St	Michael Mahoney	Kathryn Cecil Keri Steel	P 03 5231 3640 E principal@smcolac.catholic.edu.au W www.smcolac.catholic.edu.au	PO Box 24 Colac VIC 3250	DOBCEL	Rev Michael O'Toole	E2024
COLERAINE ST JOSEPH'S SCHOOL 67 Read St	Karl Dwyer	Fiona Fitzgerald	P 03 5575 2131 E principal@sjcoleraine.catholic.edu.au W www.sjcoleraine.catholic.edu.au	PO Box 17 Coleraine VIC 3315	DOBCEL	Rev Patrick Mugavin & Rev George Kuruvila	E2031
CORAGULAC ST BRENDAN'S CATHOLIC PRIMARY SCHOOL 727 Corangamite Lake Rd	Leanne Eastman	<i>Business Manager:</i> Gracesyn Perrett	P 03 5233 1464 E principal@sbcoragulac.catholic.edu.au W www.sbcoragulac.catholic.edu.au	727 Corangamite Lake Rd Coragulac VIC 3249	DOBCEL	Rev Michael O'Toole	E2042
DENNINGTON ST JOHN'S PRIMARY SCHOOL 263 Russell St	Ben van de Camp	Gayle McPherson	P 03 5562 5362 E principal@sjdennington.catholic.edu.au W www.sjdennington.catholic.edu.au	263 Russell St Dennington VIC 3280	DOBCEL	Rev John Fitzgerald & Rev John Corrigan	E2043
EDENHOPE ST MALACHY'S SCHOOL 34 Lake St	John O'Sullivan	Barb Ryan	P 03 5585 1396 E principal@smedenhope.catholic.edu.au W www.smedenhope.catholic.edu.au	34 Lake St Edenhope VIC 3318	DOBCEL	Rev Patrick Mugavin & Rev George Kuruvila	E2052
HAMILTON ST MARY'S PRIMARY SCHOOL 49 Hiller Lane	Terrielynn Groves	Helen O'Brien Shannon Smith	P 03 5551 9000 E principal@smhamilton.catholic.edu.au W www.smhamilton.catholic.edu.au	PO Box 788 Hamilton VIC 3300	DOBCEL	Rev Patrick Mugavin	E2035
KOROIT ST PATRICK'S PRIMARY SCHOOL 20 Queen St	Nick Murrell	Bronie Moloney	P 03 5565 8208 E principal@spkoroit.catholic.edu.au W www.spkoroit.catholic.edu.au	20 Queen St Koroit VIC 3282	DOBCEL	Rev John Fitzgerald & Rev John Corrigan	E2022
MORTLAKE ST COLMAN'S PRIMARY SCHOOL 28 Dunlop St	Janet Cain	Jane Lee	P 03 5599 2285 E principal@scmortlake.catholic.edu.au W www.scmortlake.catholic.edu.au	28 Dunlop St Mortlake VIC 3272	DOBCEL	Rev Gary Jones	E2051

SCHOOL CONTACTS – SOUTHERN ZONE

SCHOOL AND LOCALITY	PRINCIPAL	ADMIN SUPPORT	CONTACT DETAILS	POSTAL ADDRESS	GOV AUTHORITY	PARISH PRIEST	E #
PRIMARY SCHOOLS							
PENSHURST ST JOSEPH'S PRIMARY SCHOOL 11 Martin St	Darren Lloyd	Andrea Page	P 03 5576 5438 E principal@sjpenshurst.catholic.edu.au W www.sjpenshurst.catholic.edu.au	PO Box 42 Penshurst VIC 3289	DOBCEL	Rev Patrick Mugavin	E2019
PORT FAIRY ST PATRICK'S PARISH PRIMARY SCHOOL 9-11 William St	Olga Lyons	Rebecca Amor Janine Moloney	P 03 5568 1371 E principal@spportfairy.catholic.edu.au W www.spportfairy.catholic.edu.au	9-11 William St Port Fairy VIC 3284	DOBCEL	Rev John Fitzgerald & Rev John Corrigan	E2029
PORTLAND ALL SAINTS PARISH SCHOOL Cnr Must St and Fawthrop St	Jamie Walsh	Rochelle Bailey Joanne Drummond	P 03 5523 3654 E principal@asportland.catholic.edu.au W www.asportland.catholic.edu.au	PO Box 800 Portland VIC 3305	DOBCEL	Rev Gregory Tait	E2069
TERANG ST THOMAS' PRIMARY SCHOOL 1 Lyons St	Matthew Uzkuraitis	Linda Kenna	P 03 5592 1925 E principal@stterang.catholic.edu.au W www.stterang.catholic.edu.au	PO Box 123 Terang VIC 3264	DOBCEL	Rev Gary Jones	E2037
WARRNAMBOOL ST JOSEPH'S PRIMARY SCHOOL 70 Botanic Rd	Matthew O'Brien	Cathy Duynhoven Alecia Bidmade Kellie Mentha	P 03 5561 1343 E principal@sjwarrnambool.catholic.edu.au W www.sjwarrnambool.catholic.edu.au	70 Botanic Rd Warrnambool VIC 3280	DOBCEL	Rev John Fitzgerald & Rev John Corrigan	E2025
WARRNAMBOOL EAST OUR LADY HELP OF CHRISTIANS PRIMARY SCHOOL 28 Selby Rd	Stephen Madden	Christine Cook Kristen Baillie Rachel Kelly	P 03 5562 5559 E principal@olhcwarrnambool.catholic.edu.au W www.olhcwarrnambool.catholic.edu.au	PO Box 62 Warrnambool VIC 3280	DOBCEL	Rev Lawrence O'Toole	E2065
WARRNAMBOOL WEST ST PIUS X PARISH SCHOOL 32-34 Hoddle St	Stacey Atkins	Anne Kerr	P 03 5562 2506 E principal@spwarrnambool.catholic.edu.au W www.spwarrnambool.catholic.edu.au	32-34 Hoddle St Warrnambool West VIC 3280	DOBCEL	Rev John Fitzgerald & Rev John Corrigan	E2061
SECONDARY SCHOOLS							
CAMPERDOWN MERCY REGIONAL COLLEGE Henderson St	Sharon Gillett	Nicole Darcy <i>Business Manager:</i> Jude Murfitt	P 03 5593 2011 E principal@mercy.vic.edu.au W www.mercy.vic.edu.au	PO Box 152 Camperdown VIC 3260	DOBCEL	Rev Neville Stanislaus & Rev Gary Jones	E2033
COLAC TRINITY COLLEGE COLAC 119 Hart St	Paul Clohesy	Jenny Barake <i>Business Manager:</i> David Testa	P 03 5233 9200 E principal@tcc.vic.edu.au W www.tcc.vic.edu.au	PO Box 23 Colac VIC 3250	DOBCEL	Rev Michael O'Toole	E2072
HAMILTON MONIVAE COLLEGE 133 Ballarat Rd	Jonathan Rowe	Meg Cook <i>Business Manager:</i> Jim Bailey	P 03 5551 1200 E principal@monivae.vic.edu.au W www.monivae.com	PO Box 423 Hamilton VIC 3300	Missionaries of the Sacred Heart	Rev Patrick Mugavin	E2054
WARRNAMBOOL EMMANUEL COLLEGE 140-150 Botanic Rd	Peter Morgan	Suzanne Dwyer <i>Business Manager:</i> Stephen Kerr	P 03 5560 0888 E principal@emmanuel.vic.edu.au W www.emmanuel.vic.edu.au	PO Box 486 Warrnambool VIC 3280	Mercy Education Limited	Rev John Fitzgerald, Rev John Corrigan & Rev Lawrence O'Toole	E2080

DIOCESE
OF
BALLARAT
CATHOLIC
EDUCATION
LIMITED



**Diocese of Ballarat Catholic Education Limited
(DOBCEL)**

200 Gillies Street North, Lake Wendouree, VIC 3350

P 03 4344 4350 | E execdirector@dobcel.catholic.edu.au | W dobcel.catholic.edu.au