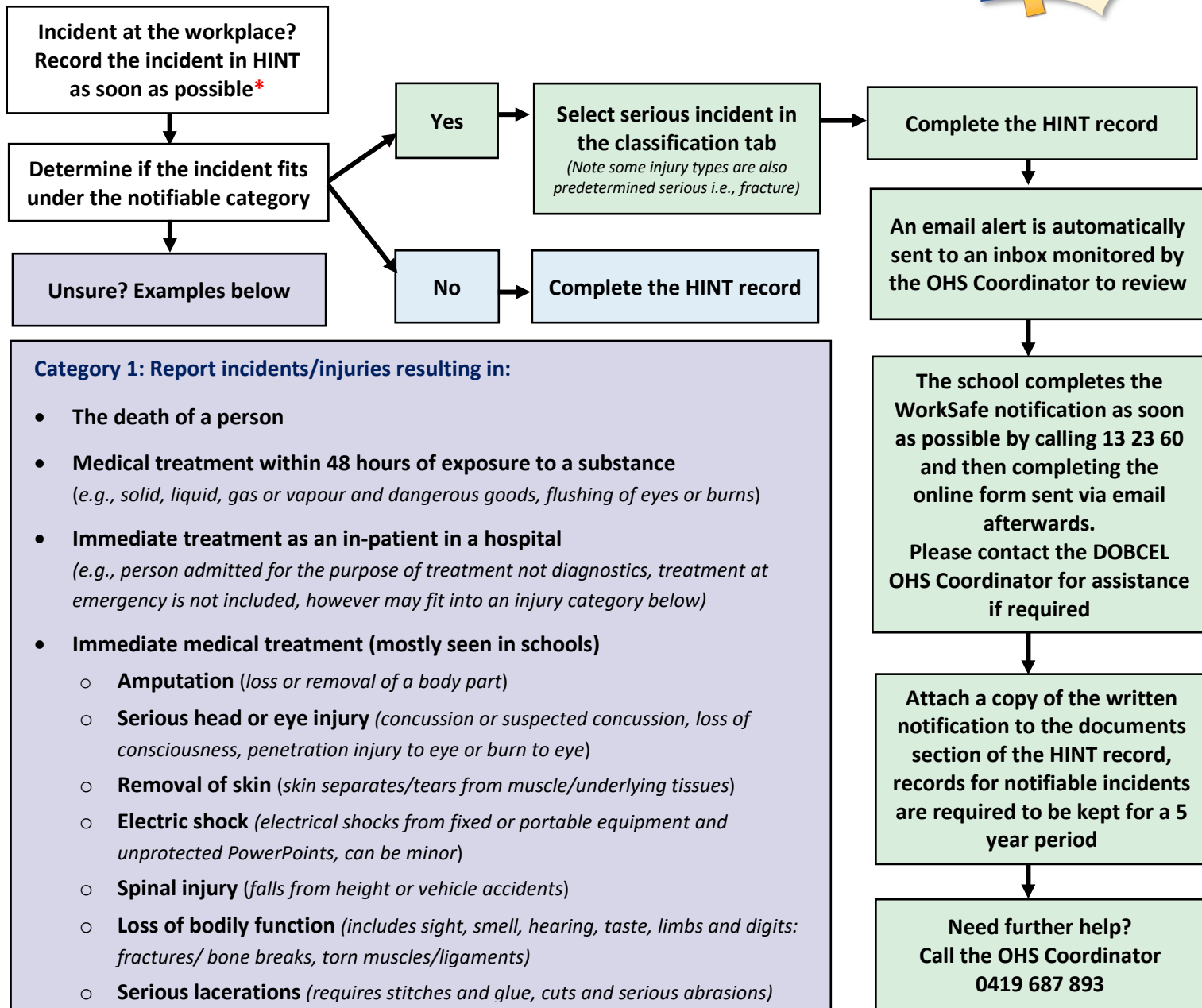




Notifiable Incidents Flowchart (Secondary School)



Category 2: Report an incident if it exposes a person to a serious risk to their health or safety emanating from an immediate or imminent exposure to (regardless if an injury has occurred):

- An uncontrolled escape, spillage or leakage of any substance, including dangerous goods within the meaning of the Dangerous Goods Act 1985 (Petrol spillage, chemicals used for science, building works incident)
- An implosion, explosion or fire (chemical incident, camping incident, equipment or building fire)
- Electric shock (electrical shocks from fixed or portable equipment and unprotected PowerPoint)
- The fall or release from height of any plant, substance, or thing (light fitting/vent fall from ceiling, drop tools from the roof)
- Collapse, overturning, failure, malfunction to any plant prescribed by OHS regulations (lifts, lawn mower, forklifts)
- Collapse or partial collapse of a building or structure (ceiling collapses, partial building collapse)
- Collapse or failure or an excavation or mine or shoring supporting the mine (trench collapse during building works)
- Inrush of water, mud or gas in a mine, underground excavation, or tunnel (flooding in building works)
- Interruption of the main system of ventilation in a mine, underground excavation, or tunnel (building works)

*If a major incident occurs, for example with multiple injuries or an explosion/fire; contact emergency services in the first instance and immediately notify WorkSafe. DO NOT wait to log a HINT record or to hear from DOBCEL.

Ensure you preserve the site of the incident.

The DOBCEL OHS Coordinator can be contacted on 0419 687 893 and WorkSafe Advisory on 13 23 60 for any advice or queries and to help determine if an incident is notifiable.