



Safety Alert #1 - Slippery Ramps and Stairs

Are your ramps or stairs slippery, need extra grip, cleaning or repairs like these pictured below?

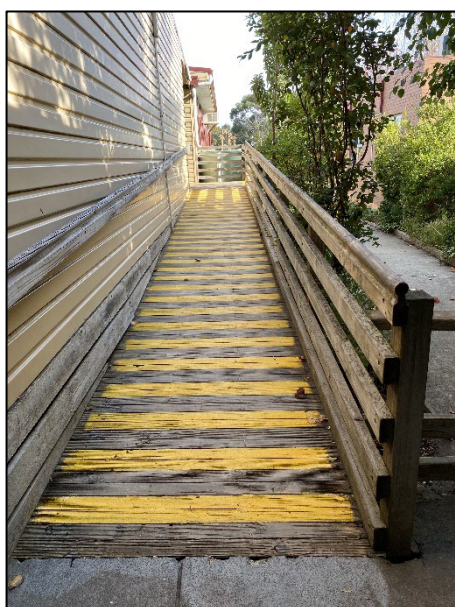


This time of year, there is an increased risk of slips, trips and falls particularly on ramps with the colder weather bringing frost and dew; falls on these surfaces have resulted in serious injuries for our staff and students.

There are different cost-effective options to reduce the slip, trip, fall risk of ramps and stairs on different surfaces; never underestimate the power of a pressure wash on concrete to lift debris.

The below examples are of new grip options A) grip paint (does need ongoing maintenance) B) Ultra Mat attached to existing surface and framed, C) Anti-slip floor plate also attached to existing surfaces. Penelope Irish from facilities can assist with recommendations, reached on 0429 473 351.

Example A



Example B



Example C

