

DIOCESE  
OF  
BALLARAT  
CATHOLIC  
EDUCATION  
LIMITED



# DIRECTORY 2025

DIOCESE OF BALLARAT CATHOLIC EDUCATION LIMITED



*As partners in  
Catholic education  
and open to God's presence,  
we pursue fullness of life for all.*

# DOBCEL ONLINE

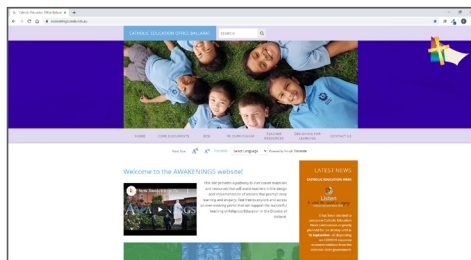
## VISIT US ONLINE



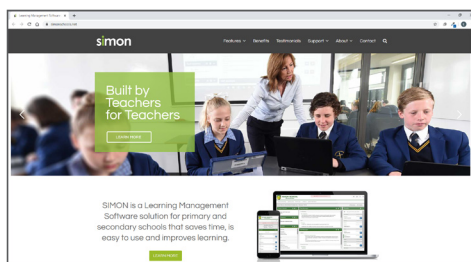
DOBCEL - <https://dobcel.catholic.edu.au/>



HIVE Resources - [www.dobcel.com](http://www.dobcel.com)



Awakenings - <https://awakenings.ceob.edu.au/>



SIMON - [www.simonschools.net](http://www.simonschools.net)



Keep up with  
our videos on  
[YouTube](https://www.youtube.com/)



Follow  
[The HIVE](https://www.facebook.com/TheHIVE/)  
on Facebook



Sign up for  
[SIMON TV](https://www.simonschools.net/simon-tv/) content  
notifications

## ACRONYM REFERENCE GUIDE

<b>ACARA</b>	Australian Curriculum, Assessment and Reporting Authority	<b>ECSI</b>	Enhancing Catholic School Identity
<b>AITSL</b>	Australian Institute for Teaching and School Leadership	<b>ESL</b>	English as a Second Language
<b>CARSOFF</b>	Compliance and Risk Support Officer Forum	<b>GAC</b>	Grants Allocation Committee
<b>CCG</b>	Catholic Capital Grants	<b>HR</b>	Human Resources
<b>CEB</b>	Catholic Education Ballarat	<b>ICON</b>	Integrated Catholic Online Network
<b>CECV</b>	Catholic Education Commission Victoria	<b>ICT</b>	Information Communication Technology
<b>CI&amp;M</b>	Catholic Identity & Mission	<b>(P)</b>	Primary
<b>DLF</b>	Diocesan Leadership Framework	<b>OLSAL-B</b>	Oral Language Supporting All Learning
<b>DOBCEL</b>	Diocese of Ballarat Catholic Education Limited	<b>RE</b>	Religious Education
<b>EAL</b>	English as an Additional Language	<b>(S)</b>	Secondary
		<b>(TP)</b>	Targeted Programs
		<b>VRQA</b>	Victorian Regulations and Qualifications Authority

# DOBCEL LOCATIONS

## CATHOLIC EDUCATION BALLARAT LOCATIONS

### Ballarat

200 Gillies Street North  
Lake Wendouree VIC 3350  
P 03 4344 4350

E [execdirector@dobcel.catholic.edu.au](mailto:execdirector@dobcel.catholic.edu.au)  
W <https://dobcel.catholic.edu.au/>  
ABN 45 121 091 506

### Horsham

6A McLachlan Street Horsham  
PO Box 20 Horsham VIC 3402

### Mildura

255 Eleventh Street Mildura  
PO Box 5106 Mildura VIC 3502

### Swan Hill

2 Murlong Street Swan Hill  
PO Box 727 Swan Hill VIC 3585

### Warrnambool

92a Liebig Street Warrnambool  
PO Box 1019 Warrnambool VIC 3280  
P 03 5561 1177

## SCHOOL LOCATIONS

School listings begin on page 30.

## ACKNOWLEDGEMENT OF COUNTRY

Diocese of Ballarat Catholic Education Limited and schools of the Ballarat Diocese acknowledge the traditional custodians of the land on which our diocesan education community is situated – from the Murray to the Sea. We commit to working in partnership with Aboriginal people for reconciliation and justice, and pay our respects to elders past, present and emerging.

## CONTENTS

Websites and Locations	2	DOBCEL Board Directors	9
Acronym Reference Guide	2	Partnership Networks and Teams	10
Message from the Bishop	3	CEB Organisational Structure Chart	11
Message from the Board Chair	3	CEB Leadership Team	12
Message from the Executive Director	4	CEB Staff Contacts	15
Diocesan Education Vision	5	School Contacts	28
DOBCEL Strategy 2035	5	Central Zone Schools	29
School Governance and Policy	6	Northern Zone Schools	34
DOBCEL Standing Committees	7	Mid-North Zone Schools	37
DOBCEL Governance Diagram	8	Southern Zone Schools	40

This directory was last updated on **12 September 2025**.

For enquiries, feedback or to request an update, please contact [comms@dobcel.catholic.edu.au](mailto:comms@dobcel.catholic.edu.au)

Cover: Ss Michael & John's Primary School, Horsham



## MESSAGE FROM THE BISHOP



In 1820, Fr John Therry founded a school in Parramatta, west of Sydney. It was the first official Catholic school in Australia. There were 31 students. From those small beginnings, Catholic education has grown to provide for young people all around the country. The first Catholic schools in our diocese of Ballarat were founded in 1849 – All Saints School in Portland and St Patrick's School in Port Fairy. As more and more people settled throughout Victoria, new parishes were established and schools provided a focal point for the local Catholic community. In our diocese today, we rejoice in 52 primary schools and 11 secondary schools.

Some of our schools are quite small, like that first Catholic school in Parramatta. Others are much larger, some with over a thousand students. But whether they are large or small, our schools have a common mission. They seek to nurture the gifts of each student and build a community inspired by the teaching and example of Christ. Jesus came that we might have life and have it to the full. Our Catholic schools seek to lead each student to the fullness of life. Jesus came to serve. Our Catholic schools encourage students to use their gifts in service.

As we begin a new school year, I ask God's blessing on all the students, staff and families involved in Catholic education in our diocese. Each year brings its own challenges and this will be true of 2025. However, knowing something of the gifts and dedication of our school communities, I am confident we will meet the challenges of the year ahead.

When we look at the history of Catholic education in this country and when we look at the vibrant school communities we have around our diocese today, we have good reason to have firm faith in the future.

A handwritten signature in blue ink, reading "Paul Bird".

**Bishop Paul Bird CSsR**  
Bishop of Ballarat

## MESSAGE FROM THE BOARD CHAIR

On behalf of the Board, I would like to welcome you all to the new school year.

Our school and parish environments continue to be challenged by the pandemic and the increasing cost of living. As always our staff have worked with students and their families to provide caring and supportive communities so that our students are able to achieve positive education outcomes.

The Board knows that this will continue to be the case in 2025 and we look forward to supporting you in this.

A handwritten signature in black ink, reading "Terry Harney".

**Mr Terrence Harney**  
Board Director and Chair  
Diocese of Ballarat Catholic Education Limited  
(DOBCEL)



## MESSAGE FROM THE EXECUTIVE DIRECTOR

Welcome to the 2025 Directory of Diocese of Ballarat Catholic Education Limited (DOBCEL), designed to assist you in understanding the diverse work and the equally diverse personnel of our leadership, service and partnership organisations.

Across our diocese, 63 Catholic primary and secondary schools, 57 DOBCEL parish schools and 6 schools governed by Religious Institutes or Ministerial Public Juridic Persons, provide distinctive Catholic education from the Murray to the Sea.

Catholic Education Ballarat is the operational arm of DOBCEL and is responsible for the implementation of DOBCEL strategies, policies and procedures, and overseeing the day to day running of our schools.

The role of DOBCEL is to lead, provide service to, and partner with all 63 schools to enable every student to flourish and every student, staff member and family to experience the presence of the risen Christ in our schools.

I wish all of our 63 school communities the very best for 2025 as we all strive to bring about our vision:

***As partners in Catholic Education,  
open to God's presence,  
we pursue fullness of life for all.***



Tom Sexton  
Executive Director  
Catholic Education Ballarat





# DIOCESAN EDUCATION VISION

## VISION

*As partners in Catholic education  
and open to God's presence,  
we pursue fullness of life for all.*

## CONTEXT

In 2012 the schools and colleges of the diocese collaboratively set about establishing a vision to guide the Catholic education community now and into the future. Our schools operate in a diverse and geographically extensive diocese which covers the west of Victoria, extending from the Murray River in the North to the Southern Ocean in the South. The Diocese of Ballarat is a place of natural, communal and economic diversity.

Catholic education in the Diocese of Ballarat occurs in interwoven communities of learners gathered in Jesus' name. It has its foundation in communities of believers who have made their education system a place of welcome to reach out to nurture all God's people. Generations of diocesan clergy, religious congregations and lay people have endeavored to establish the flourishing educational communities that exist today, with each school an expression of our foundational belief that we are all created in the image and likeness of a loving God.

# DOBCEL STRATEGY 2035

## PURSUING FULLNESS OF LIFE FOR ALL

Our vision in Catholic education in the Diocese of Ballarat is to pursue the fullness of life for every student.

We are blessed to have a good system of Catholic schools led by skilled and committed Principals, teachers, and staff, working in partnership with families, parishes, and communities.

As the world changes, we are challenged to think differently about how we can best meet the needs of our students and families.

Building on our strong foundations and rich heritage, DOBCEL 2035 aspires to courageously imagine a new tomorrow for our system - to move from good to great.

For more information, please visit our website.



# SCHOOL GOVERNANCE AND POLICY

School governance in the Diocese of Ballarat is structured as follows:

- 57 parish schools are governed by Diocese of Ballarat Catholic Education Limited (DOBCEL)
- 6 schools and colleges are governed by Religious Institutes or Ministerial Public Juridic Persons

## ABOUT DOBCEL

Bishop Paul Bird established a company limited by guarantee, Diocese of Ballarat Catholic Education Limited (DOBCEL), and appointed a board of directors to govern parish schools.

The Board of the company reports directly to Bishop Paul as the Bishop of the diocese and as the member of the company. It also approves education policies in consultation with and for the whole diocesan education community.

The day to day management of the schools governed by the company is delegated to the Executive Director, Catholic Education, and Principals of these schools have the appropriate delegations to lead and manage their schools and their staff.

Visit the DOBCEL website for further information: <https://dobcel.catholic.edu.au/>

## DOBCEL BOARD OF DIRECTORS AND EXECUTIVE SUPPORT

### Member:

Bishop Paul Bird CSsR DD

### Director and Chairperson:

Mr Terry Harney

### Company Directors:

Dr Berenice Kerr rsm

Fr John Fitzgerald

Mr Stephen McArdle

Monsignor Glynn Murphy

Ms Anne Pekin

Mr Barry Bennett

Mr Eugene Dalton

### Executive Director,

### Catholic Education Ballarat:

Mr Tom Sexton

### Co-Company Secretaries:

Mr Tom Sexton

Ms Megan Ioannou

### Public Officer:

Mr Paul Jans

### Minutes Secretary, Executive Officer and

### Administration Support:

Executive Assistant





# DOBCEL CONSULTATIVE COMMITTEES

## CATHOLIC FAITH COMMUNITY AND CULTURE CONSULTATIVE COMMITTEE

**Chair:** Laura Avery  
**Executive Officer:** Kate Lawry - Leader: Catholic Identity and Mission

### KEY FUNCTION

- Oversee the diocesan response to the promotion and enhancement of Catholic school identity across all school communities.

## ASSURANCE AND RISK CONSULTATIVE COMMITTEE

**Chair:** Marita Wright  
**Executive Officer:** Megan Ioannou – Manager, Assurance & Risk

### KEY FUNCTION

- Oversee the Risk and Audit functions of DOBCEL.

## FINANCE CONSULTATIVE COMMITTEE

**Chair:** Angela Towers  
**Executive Officer:** Paul Jans – Assistant Director: Business Services

### KEY FUNCTION

- Oversee the Financial functions of DOBCEL.

## FAMILY AND COMMUNITY ENGAGEMENT CONSULTATIVE COMMITTEE

**Chair:** Anne Pekin  
**Executive Officer:** Matthew Byrne, Deputy Director: Catholic Education

### KEY FUNCTION

- Develop strategic direction for the engagement of parents and the broader community in Catholic Education.

## CHILDREN AND YOUNG PEOPLE SAFEGUARDING AND WELLBEING CONSULTATIVE COMMITTEE

**Chair:** Michael Myers  
**Executive Officer:** Tony Perkins – Leader: Wellbeing

### KEY FUNCTION

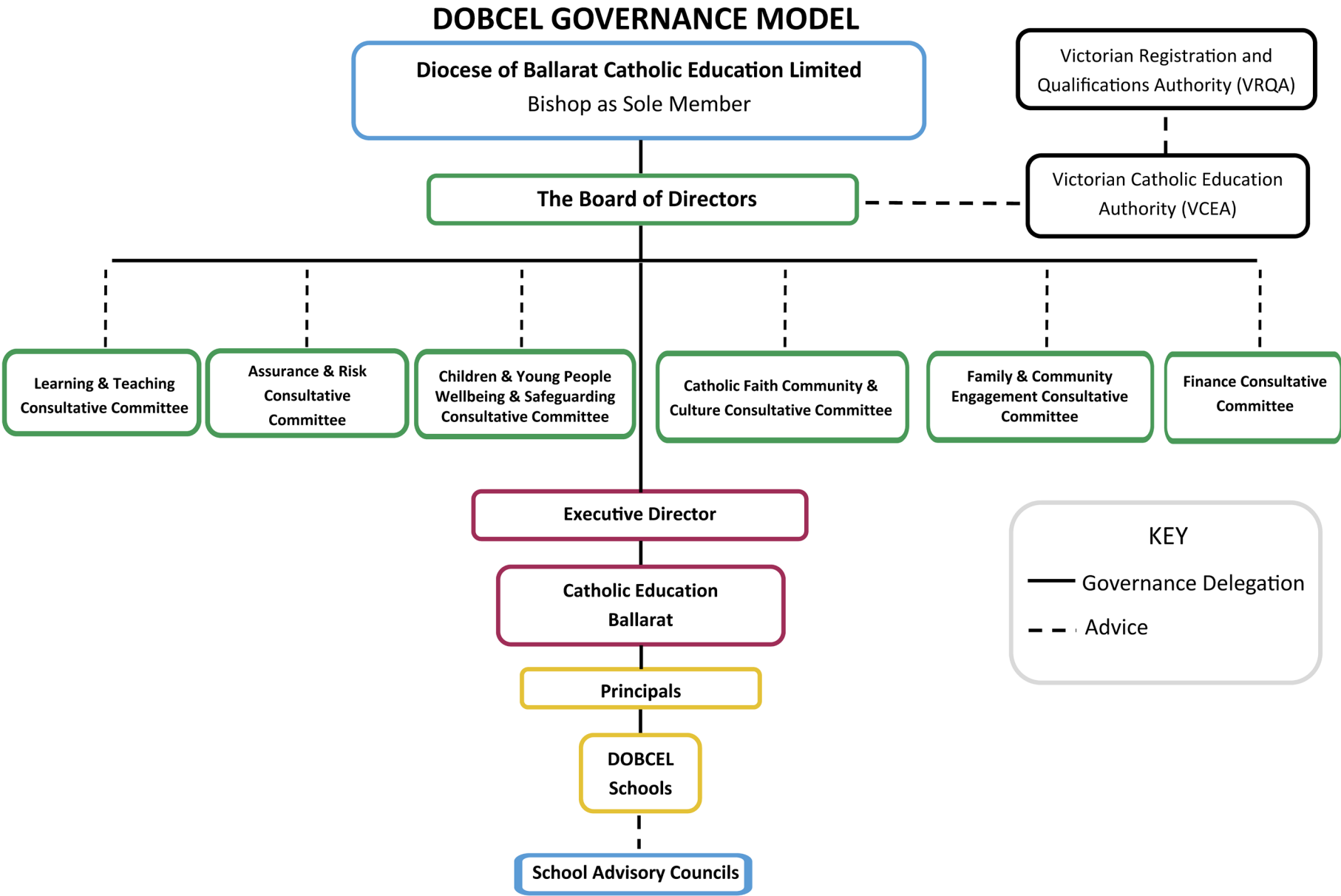
- Assess the provision of Wellbeing in the Ballarat Diocese and make recommendations to improve Wellbeing for students, teachers, principals and the school community.

## LEARNING AND TEACHING CONSULTATIVE COMMITTEE

**Chair:** Berenice Kerr  
**Executive Officer:** Joe Ewing - Leader: Learning & Teaching

### KEY FUNCTION

- Provide a forum where representatives of school communities and the Executive Director work together to fulfil specific governance responsibilities in the area of educational services and school improvement functions.





# DOBCEL BOARD DIRECTORS



**MR TERRENCE HARNEY**  
Board Director and Chair

**E** [tharney@dobcel.catholic.edu.au](mailto:tharney@dobcel.catholic.edu.au)

Terry is a former principal of St Thomas' School Terang. Now retired, Terry brings extensive practical knowledge of the realities faced by principals and of the education ministry in rural and regional areas.



**DR BERENICE KERR RSM**  
Board Director and Deputy Chair

**E** [bkerr@dobcel.catholic.edu.au](mailto:bkerr@dobcel.catholic.edu.au)

Berenice came to Ballarat as the Leader of the Sisters of Mercy Community in Western Victoria. Her main ministry has been in education in secondary schools. She has also been a consultant with Catholic Education in the Diocese of Lismore, a member of the Education Committee of the Conference of Leaders of Religious Institutes, and a member of the NSW Catholic Education Commission. Currently she is involved with writing and research.



**MONSIGNOR GLYNN MURPHY OAM**  
Board Director

**E** [gmurphy@dobcel.catholic.edu.au](mailto:gmurphy@dobcel.catholic.edu.au)

Glynn is a priest of the Ballarat Diocese, having been ordained in 1983. He has also supported Army Chaplaincy in Reservist and full-time duties since 1986, recently completing service as Director General – Chaplaincy for the Australian Army. He is a canon lawyer, having gained his qualifications from St Paul Pontifical University, Ottawa, Canada in 1989.



**MR STEPHEN MCARDLE CA/CPA**  
Board Director

**E** [smcardle@dobcel.catholic.edu.au](mailto:smcardle@dobcel.catholic.edu.au)

Stephen has practised in Ballarat as a public accountant for forty years. He is a former chair of the CEB Audit & Risk Committee and the Loreto College Ballarat Finance Committee, and is a member of the Diocesan Finance Committee.



**MR BARRY BENNETT**  
Board Director

**E** [bbennett@dobcel.catholic.edu.au](mailto:bbennett@dobcel.catholic.edu.au)

Barry has a strong background in risk, assurance and compliance. His career began in law enforcement with the Corporate Fraud Squad in the South Australian Police Force, followed by over 25 years in senior executive roles in national corporates. He later led his own consultancy, specialising in corporate and strategic risk management.



**FR JOHN FITZGERALD**  
Board Director

**E** [jfitzgerald@dobcel.catholic.edu.au](mailto:jfitzgerald@dobcel.catholic.edu.au)

Ordained in 1978, John has served in several parishes across the Ballarat Diocese. After completing a Master of Arts at Fordham University in New York, he became Director of Religious Education. He was appointed Parish Priest of St Joseph's Warrnambool in 2004 and now serves as Moderator of the Star of the Sea Parish (South West Coast).



**MS ANNE PEKIN**  
Board Director

**E** [apekin@dobcel.catholic.edu.au](mailto:apekin@dobcel.catholic.edu.au)

Anne is a Senior Nurse working at Western District Health Services in Hamilton. Anne is an outgoing member of the BDSAC and has a son who formerly attended Monivae College, Hamilton.



**MR EUGENE DALTON**  
Board Director

**E** [edalton@dobcel.catholic.edu.au](mailto:edalton@dobcel.catholic.edu.au)

Eugene has over 43 years' experience in Catholic education as a teacher, principal, and Acting Consultant. He has led schools in Terang, Hamilton, and Warrnambool, and was previously Chair of the Learning & Teaching Consultative Committee. Eugene now serves on the Children & Young People, Safeguarding & Wellbeing Consultative Committee.



# PARTNERSHIP NETWORKS AND TEAMS

## CEB EDUCATION CONSULTANT TEAM

**Lee Schlooz** - Education Consultant: Southern Zone

**Chris Mitchell** - Education Consultant: Northern Zone

**Jo-Anne Bond** - Education Consultant: Central Zone (Long-Service Leave)

**Simon Duffy** - Education Consultant: Central Zone

**Janet Claassen** - Education Consultant: Mid-North Zone

**Tim O'Farrell** - Education Consultant: Secondary

### KEY FUNCTIONS

- School Improvement Framework
- Enhancing Catholic School Identity
- Performance and development culture
- Principal selection, induction and review
- School leadership support and development

## PRINCIPAL NETWORKS

**Chairs:** **Michelle Brodrick** - Loreto College, Ballarat (Secondary)

**Emily Clarke** - St Alipius Parish School, Ballarat East (Central Zone)

**Matthew Uzkuraitis** - St Thomas', Terang (Southern Zone)

**Narelle Gallagher** - Sacred Heart Primary School, Merbein (Northern Zone)

**Sonia Turner** - St Augustine's, Maryborough (Mid-North Zone)

### KEY FUNCTIONS

- Professional learning
- Collegial support
- Networking and partnership
- Principal wellbeing
- Dialogue with director

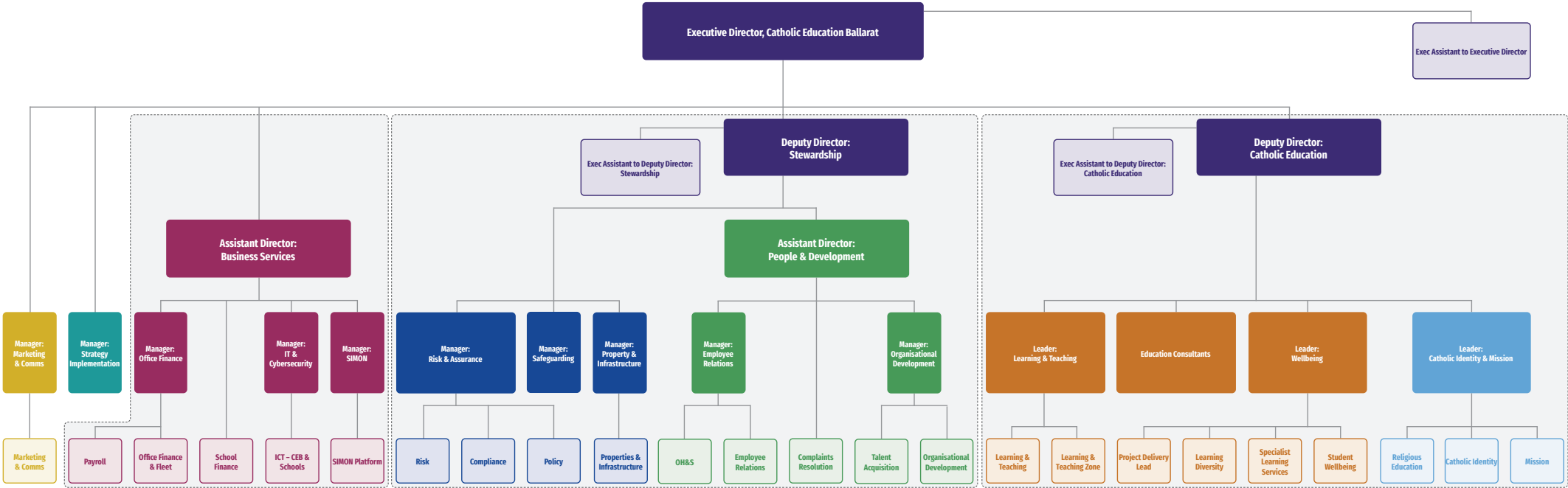




# CEB ORGANISATIONAL STRUCTURE CHART

The role of Catholic Education Ballarat (CEB) is to provide support, service and leadership to Catholic Primary and Secondary schools in the Diocese of Ballarat. CEB seeks to engage with and influence the people who make a difference in schools. Its central purpose is to build capacity in Principals, Leaders, Teachers and Students to ensure the continuing development and growth of individuals.

CEB offices are in Ballarat, Mildura, Horsham, Swan Hill and Warrnambool (see page 2). The below Organisational Structure Chart was last updated on 14 March 2025. The full Organisational Chart (including names and roles) is available at: [dobcel.catholic.edu.au/org-chart](http://dobcel.catholic.edu.au/org-chart)





**TOM SEXTON**  
Executive Director,  
Catholic Education Ballarat  
E [tsexton@dobcel.catholic.edu.au](mailto:tsexton@dobcel.catholic.edu.au)  
M 0448 512 831



**PAUL JANS**  
Assistant Director: Business Services  
E [pjans@dobcel.catholic.edu.au](mailto:pjans@dobcel.catholic.edu.au)  
M 0418 523 703



**MATTHEW BYRNE**  
Deputy Director: Catholic Education  
E [mbyrne@dobcel.catholic.edu.au](mailto:mbyrne@dobcel.catholic.edu.au)  
M 0409 138 113



**ANGE JONES**  
Assistant Director: People and Development  
E [ajones@dobcel.catholic.edu.au](mailto:ajones@dobcel.catholic.edu.au)  
M 0400 831 040



**MEGAN IOANNOU**  
Deputy Director: Stewardship  
E [mioannou@dobcel.catholic.edu.au](mailto:mioannou@dobcel.catholic.edu.au)  
M 0448 481 613



# LEADERSHIP TEAM



**LEE SCHLOOZ**  
Education Consultant:  
Southern Zone

E [lschlooz@dobcel.catholic.edu.au](mailto:lschlooz@dobcel.catholic.edu.au)  
M 0419 613 524



**KATE LAWRY**  
Leader:  
Catholic Identity and Mission

E [klawry@dobcel.catholic.edu.au](mailto:klawry@dobcel.catholic.edu.au)  
M 0428 359 854



**CHRIS MITCHELL**  
Education Consultant:  
Northern Zone

E [cmitchell@dobcel.catholic.edu.au](mailto:cmitchell@dobcel.catholic.edu.au)  
P 03 4344 4350



**TIM O'FARRELL**  
Education Consultant:  
Secondary

E [tofarrell@dobcel.catholic.edu.au](mailto:tofarrell@dobcel.catholic.edu.au)  
M 0457 808 134



**JANET CLAASSEN**  
Education Consultant:  
Mid-North

E [jclaassen@dobcel.catholic.edu.au](mailto:jclaassen@dobcel.catholic.edu.au)  
M 0418 749 379



**TONY PERKINS**  
Leader:  
Wellbeing

E [tperkins@dobcel.catholic.edu.au](mailto:tperkins@dobcel.catholic.edu.au)  
M 0417 007 166



**JO-ANNE BOND**  
Education Consultant:  
Central Zone

E [jbond@dobcel.catholic.edu.au](mailto:jbond@dobcel.catholic.edu.au)  
M 0419 650 927



**JOSEPH EWING**  
Leader:  
Learning and Teaching

E [jewing@dobcel.catholic.edu.au](mailto:jewing@dobcel.catholic.edu.au)  
M 0429 985 460

# LEADERSHIP TEAM



**TINA PHILLIPS**  
Manager:  
Employee Relations

E [tphillips@dobcel.catholic.edu.au](mailto:tphillips@dobcel.catholic.edu.au)  
M 0436 460 275



**KEVIN BRODIE**  
Manager:  
**SIMON**

E [kbrodie@simonschools.net](mailto:kbrodie@simonschools.net)  
M 0448 815 913



**DONNA MASON**  
Manager:  
**Office Finance**

E [dmason@dobcel.catholic.edu.au](mailto:dmason@dobcel.catholic.edu.au)  
P 03 4344 4350



**ANDREW WATSON**  
Interim Manager:  
Risk & Assurance

E [awatson@dobcel.catholic.edu.au](mailto:awatson@dobcel.catholic.edu.au)  
T 03 4344 4350



**DAMIAN FOSTER**  
Manager:  
IT & Cybersecurity

E [dfoster@dobcel.catholic.edu.au](mailto:dfoster@dobcel.catholic.edu.au)  
M 0417 527 382



**JULIA PETROV**  
Manager:  
Strategy Implementation

E [jpetrov@dobcel.catholic.edu.au](mailto:jpetrov@dobcel.catholic.edu.au)  
P 03 4344 4350



**ANDREW GRINDLAY**  
Manager:  
Property & Infrastructure

E [agrindlay@dobcel.catholic.edu.au](mailto:agrindlay@dobcel.catholic.edu.au)  
M 0447 755 798



**RUTH APPLEYARD**  
Manager:  
Marketing and Communications

E [rappleyard@dobcel.catholic.edu.au](mailto:rappleyard@dobcel.catholic.edu.au)  
P 03 4344 4350



**FIONA MURPHY**  
Manager:  
Organisational Development

E [fmurphy@dobcel.catholic.edu.au](mailto:fmurphy@dobcel.catholic.edu.au)  
M 0447 371 177



**JACQUI RIGHETTI**  
Manager:  
Safeguarding

E [jrighetti@dobcel.catholic.edu.au](mailto:jrighetti@dobcel.catholic.edu.au)  
M 0409 114 268



# OFFICE OF THE EXECUTIVE DIRECTOR

## EXECUTIVE DIRECTOR



**TOM SEXTON**  
Executive Director

E [execdirector@dobcel.catholic.edu.au](mailto:execdirector@dobcel.catholic.edu.au)  
M 0448 512 831

## ADMINISTRATION AND RECEPTION



**GABRIELLE O'BRIEN**  
Administration Assistant  
(Warrnambool)

E [gobrien@dobcel.catholic.edu.au](mailto:gobrien@dobcel.catholic.edu.au)  
P 03 5561 1177

## STRATEGY IMPLEMENTATION



**JULIA PETROV**  
Manager:  
Strategy Implementation

E [jpetrov@dobcel.catholic.edu.au](mailto:jpetrov@dobcel.catholic.edu.au)  
P 03 4344 4350

## EXECUTIVE ASSISTANT



**TINA MUNRO**  
Executive Assistant to the  
Executive Director

E [tmunro@dobcel.catholic.edu.au](mailto:tmunro@dobcel.catholic.edu.au)  
M 0456 734 387



**MAXINE POPE**  
Administration Assistant  
(Warrnambool)

E [mpope@dobcel.catholic.edu.au](mailto:mpope@dobcel.catholic.edu.au)  
P 03 5561 1177



**ELENA SILAK**  
Administration Assistant  
(Ballarat)

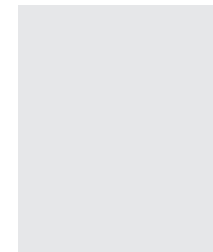
E [reception@dobcel.catholic.edu.au](mailto:reception@dobcel.catholic.edu.au)  
P 03 4344 4350

## MARKETING AND COMMUNICATIONS



**RUTH APPLEYARD**  
Manager:  
Marketing and Communications

E [rappleyard@dobcel.catholic.edu.au](mailto:rappleyard@dobcel.catholic.edu.au)  
P 03 4344 4350



**VACANT**  
Marketing and  
Communications Officer

## DEPUTY DIRECTOR: CATHOLIC EDUCATION



**MATTHEW BYRNE**  
Deputy Director:  
Catholic Education

E [mbyrne@dobcel.catholic.edu.au](mailto:mbyrne@dobcel.catholic.edu.au)  
M 0409 138 113

## EXECUTIVE ASSISTANT



**ELISE HART**  
Executive Assistant to the  
Deputy Director:  
Catholic Education

E [ehart@dobcel.catholic.edu.au](mailto:ehart@dobcel.catholic.edu.au)  
P 03 4344 4350

## EDUCATION CONSULTANTS



**JO-ANNE BOND**  
Education Consultant: Central Zone

E [jbond@dobcel.catholic.edu.au](mailto:jbond@dobcel.catholic.edu.au)  
M 0418 749 379



**CHRIS MITCHELL**  
Education Consultant:  
Northern Zone

E [cmitchell@dobcel.catholic.edu.au](mailto:cmitchell@dobcel.catholic.edu.au)  
P 03 4344 4350



**LEE SCHLOOZ**  
Education Consultant:  
Southern Zone

E [lschlooz@dobcel.catholic.edu.au](mailto:lschlooz@dobcel.catholic.edu.au)  
M 0419 613 524



**TIM O'FARRELL**  
Education Consultant:  
Secondary

E [tofarrell@dobcel.catholic.edu.au](mailto:tofarrell@dobcel.catholic.edu.au)  
M 0457 808 134



**JANET CLAASSEN**  
Education Consultant:  
Mid-North Zone

E [jclaassen@dobcel.catholic.edu.au](mailto:jclaassen@dobcel.catholic.edu.au)  
M 0418 749 379



# CATHOLIC IDENTITY AND MISSION

## LEADER: CATHOLIC IDENTITY AND MISSION



**KATE LAWRY**  
Leader:  
Catholic Identity and Mission

E [klawry@dobcel.catholic.edu.au](mailto:klawry@dobcel.catholic.edu.au)  
M 0428 359 854

## RELIGIOUS EDUCATION



**KIM HAWKES**  
Education Officer:  
Religious Education

E [khawkes@dobcel.catholic.edu.au](mailto:khawkes@dobcel.catholic.edu.au)  
M 0497 603 165



**BERNADETTE LUCKMAN**  
Education Officer:  
Religious Education

E [bluckman@dobcel.catholic.edu.au](mailto:bluckman@dobcel.catholic.edu.au)  
M 0492 324 761

## CATHOLIC IDENTITY



**GINA BERNASCONI**  
Education Officer:  
Enhancing Catholic School Identity  
(ECSI) for School Improvement

E [gbernasconi@dobcel.catholic.edu.au](mailto:gbernasconi@dobcel.catholic.edu.au)  
M 0438 523 530



**BERNADETTE TOLAN**  
Education Officer:  
Religious Education (Secondary)

E [btolan@dobcel.catholic.edu.au](mailto:btolan@dobcel.catholic.edu.au)  
M 0484 828 611



**JUSTIN MCINERNEY**  
Education Officer:  
Religious Education

E [jmcinerney@dobcel.catholic.edu.au](mailto:jmcinerney@dobcel.catholic.edu.au)  
P 03 4344 4350

## MISSION



**JIM WAIGHT**  
Education Officer:  
Formation for Mission

E [jwaight@dobcel.catholic.edu.au](mailto:jwaight@dobcel.catholic.edu.au)  
M 0417 869 912



**JO-ANNE VAN DER VOORT**  
Education Officer:  
Religious Education

E [jvandervoort@dobcel.catholic.edu.au](mailto:jvandervoort@dobcel.catholic.edu.au)  
M 0437 353 423



**SARAH PAGE**  
Social Justice Education Officer

E [spage@dobcel.catholic.edu.au](mailto:spage@dobcel.catholic.edu.au)  
M 0448 825 255

# EDUCATION SERVICES (LEARNING AND TEACHING ZONE TEAM)

## LEADER: LEARNING AND TEACHING



**JOSEPH EWING**  
Leader: Learning and Teaching

E [jewing@dobcel.catholic.edu.au](mailto:jewing@dobcel.catholic.edu.au)  
M 0429 985 460

## LEARNING AND TEACHING ZONE TEAM



**SAMANTHA MEERBACH**  
Senior Education Officer:  
Learning and Teaching  
(Central and, Northern and  
Mid-North Zones)

E [smeerbach@dobcel.catholic.edu.au](mailto:smeerbach@dobcel.catholic.edu.au)



**TERESA HADDEN**  
Education Officer:  
Learning and Teaching  
(Southern Zone)

E [thadden@dobcel.catholic.edu.au](mailto:thadden@dobcel.catholic.edu.au)  
M 0408 652 128



**SARAH MCKNIGHT**  
Education Officer:  
Learning and Teaching  
(Central and Mid-North Zones)

E [SMcKnight@dobcel.catholic.edu.au](mailto:SMcKnight@dobcel.catholic.edu.au)  
P 03 4344 4350



**JULIE COOPER**  
Education Officer:  
Learning and Teaching  
(Central and Mid-North Zones)

E [jcooper@dobcel.catholic.edu.au](mailto:jcooper@dobcel.catholic.edu.au)  
P 03 4344 4350



**BELINDA CHISWELL**  
Education Officer:  
(Primary) Learning and Teaching  
(Central and Mid-North Zones)

E [bchiswell@dobcel.catholic.edu.au](mailto:bchiswell@dobcel.catholic.edu.au)  
P 03 4344 4350



**JACQUI GORE**  
Education Officer:  
Learning and Teaching  
(Mid-North and Southern Zones)

E [jgore@dobcel.catholic.edu.au](mailto:jgore@dobcel.catholic.edu.au)  
P 03 5561 1177



**INGRID MAY**  
Education Officer:  
Learning and Teaching  
(Secondary)

E [IMay@dobcel.catholic.edu.au](mailto:IMay@dobcel.catholic.edu.au)  
P 03 4344 4350



# EDUCATION SERVICES (LEARNING AND TEACHING DIOCESAN TEAM)

## LEARNING AND TEACHING DIOCESAN TEAM



**MELISSA FOX**  
Education Officer:  
Flare Literacy Coach  
(Aurora Project)

E [mfox@dobcel.catholic.edu.au](mailto:mfox@dobcel.catholic.edu.au)  
M



**MEAGAN BECKER**  
Education Officer:  
English as an Additional Language  
(EAL)

E [mbecker@dobcel.catholic.edu.au](mailto:mbecker@dobcel.catholic.edu.au)  
M 0416 232 696



**JEANETTE MORRIS**  
Education Officer:  
Aboriginal and  
Torres Strait Islander Education

E [jmorris@dobcel.catholic.edu.au](mailto:jmorris@dobcel.catholic.edu.au)  
M 0408 360 098



**CARMEL CLARKE**  
Education Officer:  
Applied and Vocational Learning

E [cclarke@dobcel.catholic.edu.au](mailto:cclarke@dobcel.catholic.edu.au)  
M 0419 534 355



**LAUREN GOULD**  
Senior Education Officer:  
Learning and Teaching

E [lgould@dobcel.catholic.edu.au](mailto:lgould@dobcel.catholic.edu.au)  
M 0417 500 528



**HELEN CHRISTENSEN**  
Education Officer:  
Aboriginal and  
Torres Strait Islander Education

E [hchristensen@dobcel.catholic.edu.au](mailto:hchristensen@dobcel.catholic.edu.au)  
P 03 4344 4350



**EMMA RUTHERFORD**  
Education Officer:  
Flare Literacy Project Lead

E [erutherford@dobcel.catholic.edu.au](mailto:erutherford@dobcel.catholic.edu.au)  
M 0419 479 264



**BREEANA WADE**  
Education Officer:  
Flare Primary Literacy Strategy

E [bwade@dobcel.catholic.edu.au](mailto:bwade@dobcel.catholic.edu.au)  
P 03 4344 4350



**HOLLY SOUTHWELL**  
Education Officer:  
Flare Primary Literacy Strategy

E [hsouthwell@dobcel.catholic.edu.au](mailto:hsouthwell@dobcel.catholic.edu.au)  
P 03 4344 4350

# EDUCATION SERVICES (STUDENT WELLBEING TEAM)

## LEADER: WELLBEING



**TONY PERKINS**

Leader:  
Wellbeing

E [tperkins@dobcel.catholic.edu.au](mailto:tperkins@dobcel.catholic.edu.au)  
M 0417 007 166

## STUDENT WELLBEING TEAM



**BROOKE NESTER**

Education Officer:  
Student Wellbeing (Secondary)

E [bnester@dobcel.catholic.edu.au](mailto:bnester@dobcel.catholic.edu.au)  
M 0447 946 223



**JANE BENNETT**

Education Officer:  
Student Wellbeing Primary  
(Central Zone)

E [jbennett@dobcel.catholic.edu.au](mailto:jbennett@dobcel.catholic.edu.au)  
M 0417 498 902

## WELLBEING TEAM PROJECT DELIVERY LEAD



**CHRISTINE GOONAN**

Wellbeing Team  
Project Delivery Lead

E [cgoonan@dobcel.catholic.edu.au](mailto:cgoonan@dobcel.catholic.edu.au)  
M 0473 188 936



**ANNE RUDDELL**

Senior Education Officer: Student  
Wellbeing

E [aruddell@dobcel.catholic.edu.au](mailto:aruddell@dobcel.catholic.edu.au)  
M 0409 107 956



**MONIQUE RYAN**

Education Officer:  
Student Wellbeing Primary  
(Northern Zone)

E [mryan@dobcel.catholic.edu.au](mailto:mryan@dobcel.catholic.edu.au)  
M 0409 341 252



# EDUCATION SERVICES (LEARNING AND DIVERSITY TEAM)

## LEARNING DIVERSITY TEAM



**LISA TEMPLAR**  
Senior Education Officer:  
Learning Diversity

E [ltemplar@dobcel.catholic.edu.au](mailto:ltemplar@dobcel.catholic.edu.au)  
M 0488 323 833



**MELANIE SALETA**  
Education Officer:  
Learning Diversity  
(Northern Zone)

E [msaleta@dobcel.catholic.edu.au](mailto:msaleta@dobcel.catholic.edu.au)  
M 0488 013 556



**KATE SADLER**  
Education Officer:  
Learning Diversity  
(Southern Zone)

E [ksadler@dobcel.catholic.edu.au](mailto:ksadler@dobcel.catholic.edu.au)  
M 0417 885 283



**NICOLE JENKINS**  
Education Officer:  
Learning Diversity

E [njenkins@dobcel.catholic.edu.au](mailto:njenkins@dobcel.catholic.edu.au)  
M 0437 867 095



**STACEY HILDER**  
Education Officer  
Learning Diversity:  
(Mid-North Zone)

E [shilder@dobcel.catholic.edu.au](mailto:shilder@dobcel.catholic.edu.au)  
M 0473 043 160



**LEONIE WALSH**  
Learning Diversity:  
Sensory Impairments

E [lwalsh@dobcel.catholic.edu.au](mailto:lwalsh@dobcel.catholic.edu.au)  
M 0419 714 539



**JACQUI PIERCE**  
Education Officer:  
Learning Diversity

E [jpierce@dobcel.catholic.edu.au](mailto:jpierce@dobcel.catholic.edu.au)  
M 0473 098 516



**WENDY MORLEY**  
Learning Diversity:  
Sensory Impairments  
(Central Zone)

E [wmorley@dobcel.catholic.edu.au](mailto:wmorley@dobcel.catholic.edu.au)  
M 0431 360 074



**CHERYL O'DWYER**  
Visiting Teachers:  
Sensory Impairments  
(Southern Zone)

E [codwyer@dobcel.catholic.edu.au](mailto:codwyer@dobcel.catholic.edu.au)  
M 0474 640 659



**MARIA RICHARDS**  
Education Officer:  
Learning Diversity  
(Mid-North Zone)

E [mrichards@dobcel.catholic.edu.au](mailto:mrichards@dobcel.catholic.edu.au)  
M 0409 165 263



**TEISCHA COUGHLAN**  
Learning Diversity:  
Sensory Impairments  
(Central Zone)

E [tcoughlan@dobcel.catholic.edu.au](mailto:tcoughlan@dobcel.catholic.edu.au)  
M 0427 527 251

# EDUCATION SERVICES (SPECIALIST LEARNING SERVICES: PSYCHOLOGISTS)

## SPECIALIST LEARNING SERVICES TEAM



**LISA ROBB**  
Psychologist  
(Northern Zone)

E [lrobb@dobcel.catholic.edu.au](mailto:lrobb@dobcel.catholic.edu.au)  
M 0477 086 656



**TEGAN BELL**  
Senior Psychologist  
(Central Zone)

E [tbell@dobcel.catholic.edu.au](mailto:tbell@dobcel.catholic.edu.au)  
M 0403 871 178



**DANIELLE BUZAGLO**  
Psychologist  
(Southern Zone)

E [dbuzaglo@dobcel.catholic.edu.au](mailto:dbuzaglo@dobcel.catholic.edu.au)  
M 0419 138 916



**PATRICE RICKARD**  
Psychologist  
(Mid-North Zone)

E [prickard@dobcel.catholic.edu.au](mailto:prickard@dobcel.catholic.edu.au)  
M 0448 730 163



**REBECCA PETRIE**  
Psychologist  
(Central Zone)

E [rpetrie@dobcel.catholic.edu.au](mailto:rpetrie@dobcel.catholic.edu.au)  
M 0474 311 877



**ELLEN DOWIE**  
Psychologist  
(Central Zone)

E [EDowie@dobcel.catholic.edu.au](mailto:EDowie@dobcel.catholic.edu.au)  
M 0427 370 488

# EDUCATION SERVICES (SPECIALIST LEARNING SERVICES: SPEECH PATHOLOGISTS)

## SPECIALIST LEARNING SERVICES TEAM



**ROBYN CRANAGE**  
Senior Speech Pathologist

E [rcranage@dobcel.catholic.edu.au](mailto:rcranage@dobcel.catholic.edu.au)  
M 0438 564 036



**CHELSEA HARRIS**  
Speech Pathologist  
(Northern Zone)

E [charris@dobcel.catholic.edu.au](mailto:charris@dobcel.catholic.edu.au)  
M 0438 537 512



**ASHLEIGH FRECKLETON**  
Speech Pathologist  
(Mid-North Zone)

E [afreckleton@dobcel.catholic.edu.au](mailto:afreckleton@dobcel.catholic.edu.au)  
M 0457 794 331



**REBECCA FREE**  
Speech Pathologist  
(Southern Zone)

E [rfree@dobcel.catholic.edu.au](mailto:rfree@dobcel.catholic.edu.au)  
M 0408 362 585



**RACHAEL ELHAY**  
Speech Pathologist  
(Southern Zone)

E [RElhay@dobcel.catholic.edu.au](mailto:RElhay@dobcel.catholic.edu.au)  
M 0455 267 703



**MIRANDA PEARSE**  
Speech Pathologist  
(Central Zone)

E [mpearse@dobcel.catholic.edu.au](mailto:mpearse@dobcel.catholic.edu.au)  
M 0466 309 000



**SARAH MACDONALD**  
Speech Pathologist  
(Mid-North Zone)

E [smacdonald@dobcel.catholic.edu.au](mailto:smacdonald@dobcel.catholic.edu.au)  
M 0417 262 107



# STEWARDSHIP

## DEPUTY DIRECTOR: STEWARDSHIP



### MEGAN IOANNOU

Deputy Director:  
Stewardship

E [mioannou@dobcel.catholic.edu.au](mailto:mioannou@dobcel.catholic.edu.au)  
M 0448 481 613

## MANAGER: PROPERTY AND INFRASTRUCTURE



### ANDREW GRINDLAY

Manager:  
Property & Infrastructure

E [agrindlay@dobcel.catholic.edu.au](mailto:agrindlay@dobcel.catholic.edu.au)  
M 0447 755 798

## MANAGER: SAFEGUARDING



### JACQUI RIGHETTI

Manager:  
Safeguarding

E [jrighetti@dobcel.catholic.edu.au](mailto:jrighetti@dobcel.catholic.edu.au)  
M 0409 114 268

## EXECUTIVE ASSISTANT



### NADIA WARNES

Executive Assistant to Deputy  
Director:  
Stewardship

E [nwarnes@dobcel.catholic.edu.au](mailto:nwarnes@dobcel.catholic.edu.au)  
P 0408 831 581

## PROPERTIES AND FACILITIES



### PENELOPE IRISH

Property and Facilities Advisor

E [pirish@dobcel.catholic.edu.au](mailto:pirish@dobcel.catholic.edu.au)  
M 0429 473 351



### BRENDAN CHALMERS

Capital Delivery Officer

E [bchalmers@dobcel.catholic.edu.au](mailto:bchalmers@dobcel.catholic.edu.au)  
M 0477 499 376



### MADELEINE INGHAM

School Capital Planning Officer

E [Mingham@dobcel.catholic.edu.au](mailto:Mingham@dobcel.catholic.edu.au)  
M 0477 227 681

## MANAGER: RISK & ASSURANCE



**DR ANDREW WATSON**  
Interim Manager: Risk & Assurance

E [AWatson@dobcel.catholic.edu.au](mailto:AWatson@dobcel.catholic.edu.au)  
P 03 4344 4350

## RISK AND EMERGENCY MANAGEMENT



**SAM CAMPBELL**  
Risk Management Officer

E [SCampbell@dobcel.catholic.edu.au](mailto:SCampbell@dobcel.catholic.edu.au)  
M 0499 814 535

## COMPLIANCE



**PAUL BROWN**  
Compliance and Risk Support Officer

E [pbrown@dobcel.catholic.edu.au](mailto:pbrown@dobcel.catholic.edu.au)  
M 0482 804 296

## POLICY AND GOVERNANCE



**VICTORIA FARA**  
Policy and Governance Administrator

E [VFara@dobcel.catholic.edu.au](mailto:VFara@dobcel.catholic.edu.au)  
P 03 4344 4350



**TOM KERNICK**  
Emergency Management Advisor

E [tkernick@dobcel.catholic.edu.au](mailto:tkernick@dobcel.catholic.edu.au)  
M 0436 312 624



**VICKY HODGSON**  
Compliance and Risk Support Officer

E [vhodgson@dobcel.catholic.edu.au](mailto:vhodgson@dobcel.catholic.edu.au)  
M 0400 883 050



**BRIDIE CURRAN**  
Compliance and Risk Support Officer (Horsham)

E [bcurran@dobcel.catholic.edu.au](mailto:bcurran@dobcel.catholic.edu.au)  
P 03 4344 4350

# PEOPLE AND DEVELOPMENT

## ASSISTANT DIRECTOR: PEOPLE & DEVELOPMENT



**ANGE JONES**  
Assistant Director:  
People and Development

E [ajones@dobcel.catholic.edu.au](mailto:ajones@dobcel.catholic.edu.au)  
M 0400 831 040

## CASE COORDINATOR: COMPLAINTS RESOLUTION



**SARAH POPE**  
Case Coordinator:  
Complaints Resolution

E [spope@dobcel.catholic.edu.au](mailto:spope@dobcel.catholic.edu.au)  
M 0461 376 895

## HUMAN RESOURCES



**TINA PHILLIPS**  
Manager:  
Employee Relations

E [tphillips@dobcel.catholic.edu.au](mailto:tphillips@dobcel.catholic.edu.au)  
M 0436 460 275



**JO HUNTLEY**  
Employee Relations Consultant

E [jhuntley@dobcel.catholic.edu.au](mailto:jhuntley@dobcel.catholic.edu.au)  
M 0429 598 163



**LEAH CROUGH**  
Occupational Health  
and Safety Coordinator

E [lcrough@dobcel.catholic.edu.au](mailto:lcrough@dobcel.catholic.edu.au)  
M 0419 687 893



**NICK BARTA**  
Employee Relations Consultant

E [nbarta@dobcel.catholic.edu.au](mailto:nbarta@dobcel.catholic.edu.au)  
M 0492 327 650

## ORGANISATIONAL DEVELOPMENT



**FIONA MURPHY**  
Manager:  
Organisational Development

E [fmurphy@dobcel.catholic.edu.au](mailto:fmurphy@dobcel.catholic.edu.au)  
M 0447 371 177



**MATTHEW WATSON**  
LMS Administrator

E [mwatson@dobcel.catholic.edu.au](mailto:mwatson@dobcel.catholic.edu.au)  
P 03 4344 4350



**EMMA BALDWIN**  
Organisational Development  
Advisor

E [ebaldwin@dobcel.catholic.edu.au](mailto:ebaldwin@dobcel.catholic.edu.au)  
P 03 4344 4350



**VICKI DEKKER**  
Talent Acquisition Partner

E [VDekker@dobcel.catholic.edu.au](mailto:VDekker@dobcel.catholic.edu.au)  
P 03 4344 4350



**JAMES MURPHY**  
Human Resources Generalist

E [jmurphy@dobcel.catholic.edu.au](mailto:jmurphy@dobcel.catholic.edu.au)  
P 03 4344 4350



# BUSINESS SERVICES

## ASSISTANT DIRECTOR: BUSINESS SERVICES



**PAUL JANS**  
Assistant Director:  
Business Services

E [pjans@dobcel.catholic.edu.au](mailto:pjans@dobcel.catholic.edu.au)  
M 0418 523 703

## SCHOOL FINANCE



**MATT MACDONALD**  
Business Manager

E [mmacdonald@dobcel.catholic.edu.au](mailto:mmacdonald@dobcel.catholic.edu.au)  
M 0447 366 722

## ICT – CEB AND SCHOOLS



**DAMIAN FOSTER**  
Manager: IT & Cybersecurity

E [dfoster@dobcel.catholic.edu.au](mailto:dfoster@dobcel.catholic.edu.au)  
M 0417 527 382

## OFFICE FINANCE



**DONNA MASON**  
Manager: Office Finance

E [dmason@dobcel.catholic.edu.au](mailto:dmason@dobcel.catholic.edu.au)  
P 03 4344 4350



**DEAN PIDGEON**  
Business Manager

E [dpidgeon@dobcel.catholic.edu.au](mailto:dpidgeon@dobcel.catholic.edu.au)  
M 0419 363 889



**ANDRIJAN CVETANOSKI**  
ICT Systems Administrator

E [acvetanovski@dobcel.catholic.edu.au](mailto:acvetanovski@dobcel.catholic.edu.au)  
P 03 4344 4350



**MICHELLE LEONARD**  
Finance Officer

E [mleonard@dobcel.catholic.edu.au](mailto:mleonard@dobcel.catholic.edu.au)  
P 03 4344 4350



**JORDAN SMITH**  
Financial Accountant

E [jsmith@dobcel.catholic.edu.au](mailto:jsmith@dobcel.catholic.edu.au)  
P 03 4344 4350



**NOEL LINAYAO**  
ICT Systems Administrator  
& ICT Support Officer

E [nlinayao@dobcel.catholic.edu.au](mailto:nlinayao@dobcel.catholic.edu.au)  
P 03 4344 4350



**ASH RICHARDSON**  
Admin, Finance and Fleet Officer

E [arichardson@dobcel.catholic.edu.au](mailto:arichardson@dobcel.catholic.edu.au)  
M 0488 126 450



**STEPHEN WOODGER**  
ICT Systems Administrator  
& ICT Support Officer

E [swoodger@dobcel.catholic.edu.au](mailto:swoodger@dobcel.catholic.edu.au)  
P 03 4344 4350



**OAKLEY SIMS**  
ICT Support Specialist

E [osims@dobcel.catholic.edu.au](mailto:osims@dobcel.catholic.edu.au)  
P 03 4344 4350

## PAYROLL

**CHRIS YOUNG**

Team Leader:  
Payroll

E [cyoung@dobcel.catholic.edu.au](mailto:cyoung@dobcel.catholic.edu.au)  
P 03 4344 4350

**EMILY DELVES**

Payroll Officer

E [edelves@dobcel.catholic.edu.au](mailto:edelves@dobcel.catholic.edu.au)  
P 03 4344 4350

**EMMA SANDERS**

Payroll Officer

E [esanders@dobcel.catholic.edu.au](mailto:esanders@dobcel.catholic.edu.au)  
P 03 4344 4350

**PAM MARTIN**

Payroll Officer

E [pmartin@dobcel.catholic.edu.au](mailto:pmartin@dobcel.catholic.edu.au)  
P 03 4344 4350

**TAMARA MIHALEC**

Payroll Administration Officer

E [tmihalec@dobcel.catholic.edu.au](mailto:tmihalec@dobcel.catholic.edu.au)  
P 03 4344 4350

**GAYLE MCPHERSON**

Payroll Officer

E [gmcpherson@dobcel.catholic.edu.au](mailto:gmcpherson@dobcel.catholic.edu.au)  
P 03 4344 4350

**DORIS MILESEVIC**

Payroll Officer

E [dmilesevic@dobcel.catholic.edu.au](mailto:dmilesevic@dobcel.catholic.edu.au)  
P 03 4344 4350

**TRISHA FORREST**

Payroll Officer

E [tforrest@dobcel.catholic.edu.au](mailto:tforrest@dobcel.catholic.edu.au)  
P 03 4344 4350

**ANNIE BROWN**

Payroll Administration Officer

E [abrown2@dobcel.catholic.edu.au](mailto:abrown2@dobcel.catholic.edu.au)  
P 03 4344 4350

**SUSAN KERN**

Payroll Officer

E [skern@dobcel.catholic.edu.au](mailto:skern@dobcel.catholic.edu.au)  
P 03 4344 4350

**LOUISE SCICLUNA**

Payroll Officer

E [lscicluna@dobcel.catholic.edu.au](mailto:lscicluna@dobcel.catholic.edu.au)  
P 03 4344 4350

**MADI BROWN**

Payroll Administration Officer

E [mbrown@dobcel.catholic.edu.au](mailto:mbrown@dobcel.catholic.edu.au)  
P 03 4344 4350

# BUSINESS SERVICES (SIMON)

simon



**KEVIN BRODIE**

Manager:  
SIMON

E [kbrodie@simonschools.net](mailto:kbrodie@simonschools.net)  
M 0448 815 913



**MARK VANDERKLEY**

Head of Software Development

E [mvanderkley@simonschools.net](mailto:mvanderkley@simonschools.net)  
P 03 4344 4350



**ANDREW WEIR**

Customer Relations and  
Support Manager

E [aweir@simonschools.net](mailto:aweir@simonschools.net)  
M 0400 526 641



**LISA GRAINGER**

Business and Partner Consultant -  
ICT and Business Systems

E [lgrainger@dobcel.catholic.edu.au](mailto:lgrainger@dobcel.catholic.edu.au)  
P 03 4344 4350



**BEN BARKER**

Software Developer

E [bbarker@simonschools.net](mailto:bbarker@simonschools.net)  
P 03 4344 4350



**TIM WILSON**

Systems Lead and  
Support Analyst

E [twilson@simonschools.net](mailto:twilson@simonschools.net)  
P 03 4344 4350



**EVE HUF**

Software Developer

E [shuf@simonschools.net](mailto:shuf@simonschools.net)  
P 03 4344 4350



**JEREMY SPEDDING**

Software Developer

E [jspedding@dobcel.catholic.edu.au](mailto:jspedding@dobcel.catholic.edu.au)  
P 03 4344 4350



**STEPHANIE PORTER**

Primary School Consultant  
and Support Analyst

E [sporter@simonschools.net](mailto:sporter@simonschools.net)  
P 03 4344 4350



**RORY WALSH**

Software Developer

E [rwalsh@simonschools.net](mailto:rwalsh@simonschools.net)  
P 03 4344 3450



**TEGAN BURGESS MILLER**

Support Analyst

E [tburgess@simonschools.net](mailto:tburgess@simonschools.net)  
P 03 4344 4350



**MATTHEW LE NEPVEU**

Software Developer

E [mlenepveu@simonschools.net](mailto:mlenepveu@simonschools.net)  
P 03 4344 4350



**KANISHKA HITIHAMILLAGE**

Software Developer

E [khitihamillage@simonschools.net](mailto:khitihamillage@simonschools.net)  
P 03 4344 3450



**ANGELA VAN BERKEL**

Administration and  
Support Analyst

E [avanberkel@simonschools.net](mailto:avanberkel@simonschools.net)  
P 03 4344 4350

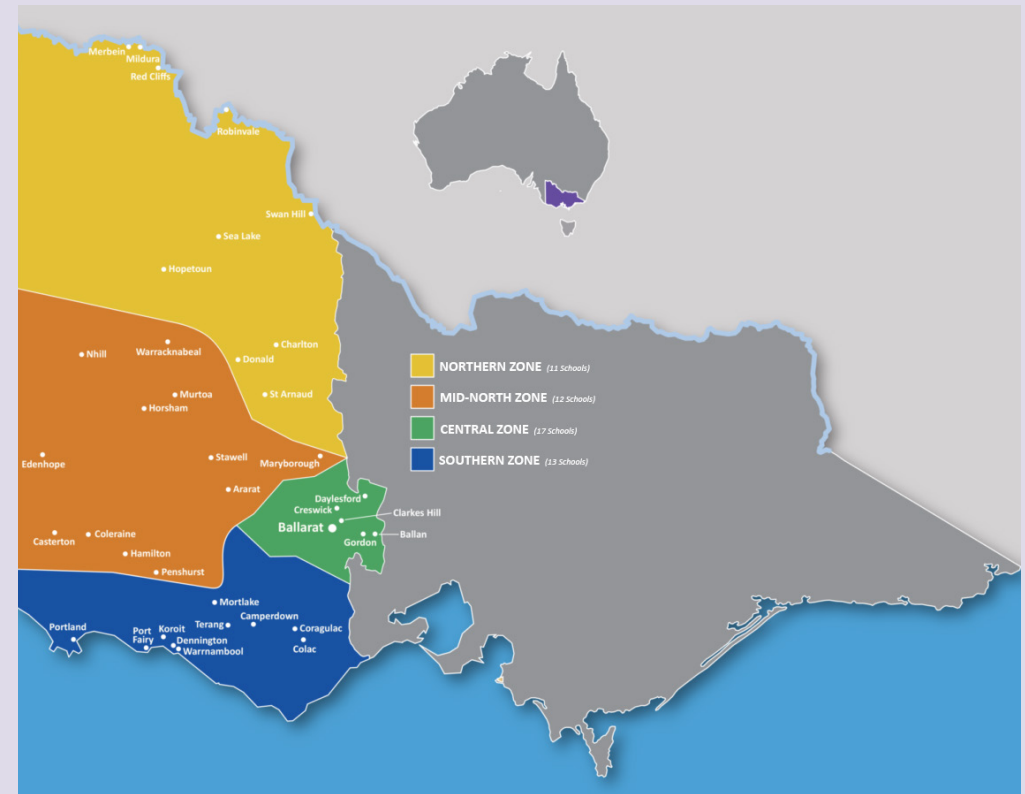


# SCHOOL CONTACTS



SMJ, Horsham

The Diocese of Ballarat is divided into the Northern, Southern and Central zones and consists of a wide range of schools from smaller rural settings to larger regional centres. Over 18,939 students are enrolled in 51 Primary Schools, 1 Foundation to Year 8 School, and 11 Secondary Schools. The Diocese covers the Murray River in the north to the Southern Ocean in the south.

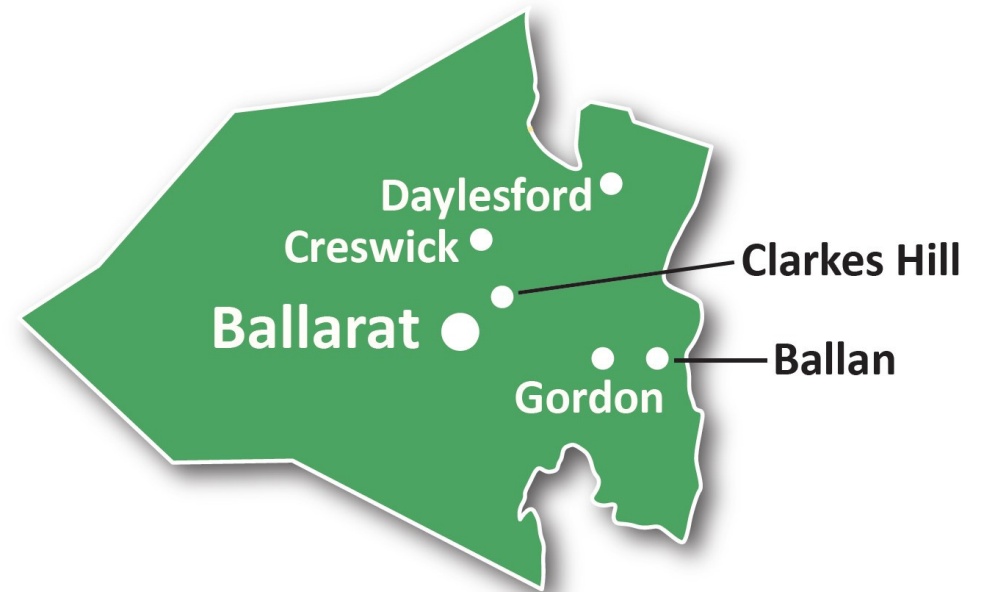






### CENTRAL ZONE LOCATIONS

- Ballan
- Ballarat
- Clarkes Hill
- Creswick
- Daylesford
- Gordon



# SCHOOL CONTACTS – CENTRAL ZONE

SCHOOL AND LOCALITY	PRINCIPAL	ADMIN SUPPORT	CONTACT DETAILS	POSTAL ADDRESS	GOV AUTHORITY	PARISH PRIEST	E #
<b>PRIMARY SCHOOLS</b>							
<b>ALFREDTON</b> <b>ST THOMAS MORE SCHOOL</b> Cuthberts Rd	Simon Duffy	Renee Whitefield	P 03 5334 2244 E <a href="mailto:principal@stmalfredton.catholic.edu.au">principal@stmalfredton.catholic.edu.au</a> W <a href="http://www.stmalfredton.catholic.edu.au">www.stmalfredton.catholic.edu.au</a>	PO Box 230W Ballarat West VIC 3350	DOBCEL	Rev Ed Moloney	E2068
<b>BALLAN</b> <b>ST BRIGID'S PRIMARY SCHOOL</b> 98 Inglis St	Jayne Bosworth	Jodie Mullane	P 03 5368 1015 E <a href="mailto:principal@sballan.catholic.edu.au">principal@sballan.catholic.edu.au</a> W <a href="http://www.sballan.catholic.edu.au">www.sballan.catholic.edu.au</a>	98 Inglis St Ballan VIC 3342	DOBCEL	Rev Justin Driscoll	E2009
<b>BALLARAT</b> <b>ST PATRICK'S PARISH PRIMARY SCHOOL</b> 119 Drummond St	Ben Shields	Julia Geue	P 03 5332 7680 E <a href="mailto:principal@spballarat.catholic.edu.au">principal@spballarat.catholic.edu.au</a> W <a href="http://www.spballarat.catholic.edu.au">www.spballarat.catholic.edu.au</a>	PO Box 82W Ballarat West VIC 3350	DOBCEL	Rev Ed Moloney	E2002
<b>BALLARAT EAST</b> <b>ST ALIPIUS PARISH SCHOOL</b> 106-108 Victoria St	Emily Clarke	Danielle Ruyg <i>Business Manager:</i> Lauren Morris	P 03 5331 1816 E <a href="mailto:principal@saballarat.catholic.edu.au">principal@saballarat.catholic.edu.au</a> W <a href="http://www.saballarat.catholic.edu.au">www.saballarat.catholic.edu.au</a>	PO Box 1197 Bakery Hill VIC 3354	DOBCEL	Rev Justin Driscoll	E2003
<b>BALLARAT EAST</b> <b>ST FRANCIS XAVIER PRIMARY SCHOOL</b> 100 Fortune St	Mark Hogbin	Maureen McLean	P 03 5331 6311 E <a href="mailto:principal@sfxballarat.catholic.edu.au">principal@sfxballarat.catholic.edu.au</a> W <a href="http://www.sfxballarat.catholic.edu.au">www.sfxballarat.catholic.edu.au</a>	PO Box 2027 Ballarat Mail Centre Ballarat East VIC 3354	DOBCEL	Rev Justin Driscoll	E2039
<b>BALLARAT NORTH</b> <b>ST COLUMBA'S SCHOOL</b> 306 Howard St	Bambi Afford Shaun Mohr	Emma Busuttill	P 03 5332 4894 E <a href="mailto:principal@scballarat.catholic.edu.au">principal@scballarat.catholic.edu.au</a> W <a href="http://www.scballarat.catholic.edu.au">www.scballarat.catholic.edu.au</a>	306 Howard St Soldiers Hill VIC 3350	DOBCEL	Rev Ed Moloney	E2038
<b>CLARKES HILL</b> <b>ST MARY'S PRIMARY SCHOOL</b> 131 Powells Rd	Clare Scanlon	Claire Hay Majella Muller	P 03 5334 5280 E <a href="mailto:principal@smclarkeshill.catholic.edu.au">principal@smclarkeshill.catholic.edu.au</a> W <a href="http://www.smclarkeshill.catholic.edu.au">www.smclarkeshill.catholic.edu.au</a>	131 Powells Rd Clarke's Hill VIC 3352	DOBCEL	Rev Justin Driscoll	E2048
<b>CRESWICK</b> <b>ST AUGUSTINE'S PARISH PRIMARY SCHOOL</b> 119 Napier St	Michael Heenan	Karen Williams	P 03 5345 2106 E <a href="mailto:principal@sacreswick.catholic.edu.au">principal@sacreswick.catholic.edu.au</a> W <a href="http://www.sacreswick.catholic.edu.au">www.sacreswick.catholic.edu.au</a>	PO Box 413 Creswick VIC 3363	DOBCEL	Rev Marcello Colasante	E2012
<b>DAYLESFORD</b> <b>ST MICHAEL'S PRIMARY SCHOOL</b> 29 Smith St	Tim Hogan	Sarah Mooney <i>Business Manager:</i> Leah Monaghan	P 03 5348 1261 E <a href="mailto:principal@smdaylesford.catholic.edu.au">principal@smdaylesford.catholic.edu.au</a> W <a href="http://www.smdaylesford.catholic.edu.au">www.smdaylesford.catholic.edu.au</a>	PO Box 561 Daylesford VIC 3460	DOBCEL	Rev Marcello Colasante	E2076
<b>DELACOMBE</b> <b>LUMEN CHRISTI PRIMARY SCHOOL</b> 111 Whitelaw Ave	Carmel Hanley	Christine Smale <i>Business Manager:</i> Bernadette Martin	P 03 5336 2015 E <a href="mailto:principal@lcdelacombe.catholic.edu.au">principal@lcdelacombe.catholic.edu.au</a> W <a href="http://www.lcdelacombe.catholic.edu.au">www.lcdelacombe.catholic.edu.au</a>	111 Whitelaw Ave Delacombe VIC 3356	DOBCEL	Rev Concord Bagaisan	E2073
<b>GORDON</b> <b>ST PATRICK'S SCHOOL</b> 1564 Old Melbourne Rd	Paul McDowell	Julie Toohey	P 03 5368 9495 E <a href="mailto:principal@spgordon.catholic.edu.au">principal@spgordon.catholic.edu.au</a> W <a href="http://www.spgordon.catholic.edu.au">www.spgordon.catholic.edu.au</a>	1564 Old Melbourne Rd Gordon VIC 3345	DOBCEL	Rev Justin Driscoll	E2010



# SCHOOL CONTACTS – CENTRAL ZONE

SCHOOL AND LOCALITY	PRINCIPAL	ADMIN SUPPORT	CONTACT DETAILS	POSTAL ADDRESS	GOV AUTHORITY	PARISH PRIEST	E #
PRIMARY SCHOOLS							
<b>LUCAS</b> <b>SIENA CATHOLIC PRIMARY SCHOOL</b> 150 Eleanor Dve	Shelley Ryan	Cass Klain Jessica Mason <i>Business Manager:</i> Gen Willmott	P 03 5334 3096 E <a href="mailto:principal@slucas.catholic.edu.au">principal@slucas.catholic.edu.au</a> W <a href="http://www.slucas.catholic.edu.au">www.slucas.catholic.edu.au</a>	PO Box 4213 Alfredton VIC 3350	DOBCEL	Rev Ed Moloney	E2079
<b>MOUNT CLEAR</b> <b>EMMAUS CATHOLIC PRIMARY SCHOOL</b> 1503 Geelong Rd	Ethan Corfee	Emma Mumford <i>Business Manager:</i> Rachel Knight	P 03 5330 2266 E <a href="mailto:principal@emtclear.catholic.edu.au">principal@emtclear.catholic.edu.au</a> W <a href="http://www.emtclear.catholic.edu.au">www.emtclear.catholic.edu.au</a>	PO Box 41 Mount Clear VIC 3350	DOBCEL	Rev Justin Driscoll	E2078
<b>REDAN</b> <b>ST ALOYSIUS PRIMARY SCHOOL</b> 800 Ripon St South	Narelle Cox	Lesley Brown <i>Business Manager:</i> Robert Rosenow	P 03 5335 8177 E <a href="mailto:principal@saredan.catholic.edu.au">principal@saredan.catholic.edu.au</a> W <a href="http://www.saredan.catholic.edu.au">www.saredan.catholic.edu.au</a>	PO Box 48R Redan VIC 3350	DOBCEL	Rev Concord Bagaisan OSJ	E2007
<b>SEBASTOPOL</b> <b>ST JAMES' PRIMARY SCHOOL</b> 260 Albert St	Garth Kydd	Lisa Dixon	P 03 5335 8750 E <a href="mailto:principal@sjsebastopol.catholic.edu.au">principal@sjsebastopol.catholic.edu.au</a> W <a href="http://www.sjsebastopol.catholic.edu.au">www.sjsebastopol.catholic.edu.au</a>	260 Albert St Sebastopol VIC 3356	DOBCEL	Rev Concord Bagaoisan OSJ	E2057
<b>WENDOUREE</b> <b>OUR LADY HELP OF CHRISTIANS SCHOOL</b> 480A Gillies St	Jaci Commons	Lisa McKenzie Karen Bell	P 03 5339 4726 E <a href="mailto:principal@olhcwendouree.catholic.edu.au">principal@olhcwendouree.catholic.edu.au</a> W <a href="http://www.olhcwendouree.catholic.edu.au">www.olhcwendouree.catholic.edu.au</a>	480A Gillies St Wendouree VIC 3355	DOBCEL	Rev Marcello Colasante	E2064
SECONDARY SCHOOLS							
<b>BALLARAT</b> <b>LORETO COLLEGE</b> 1600 Sturt St	Michelle Brodrick	Stephanie Crawford <i>Business Manager:</i> Brenton Riordan	P 03 5329 6100 E <a href="mailto:principal@loreto.vic.edu.au">principal@loreto.vic.edu.au</a> W <a href="http://www.loreto.vic.edu.au">www.loreto.vic.edu.au</a>	1600 Sturt St Ballarat VIC 3350	Loreto Ministries Ltd	Rev Ed Moloney	E2005
<b>BALLARAT</b> <b>ST PATRICK'S COLLEGE</b> 1431 Sturt St	Steven O'Connor	Jo McKee <i>Business Manager:</i> Andrew Jirik	P 03 5331 1688 E <a href="mailto:principal@stpats.vic.edu.au">principal@stpats.vic.edu.au</a> W <a href="http://www.stpats.vic.edu.au">www.stpats.vic.edu.au</a>	Locked Bag 31 Ballarat VIC 3350	Edmund Rice Education Aust	Rev Ed Moloney	E2001
<b>MOUNT CLEAR</b> <b>DAMASCUS COLLEGE</b> 1412 Geelong Rd	Steven Mifsud	Katrina McGerry <i>Business Manager:</i>	P 03 5337 2222 E <a href="mailto:principal@damascus.vic.edu.au">principal@damascus.vic.edu.au</a> W <a href="http://www.damascus.vic.edu.au">www.damascus.vic.edu.au</a>	1412 Geelong Rd Mount Clear VIC 3350	DOBCEL	Rev Justin Driscoll	E2075
SPECIALIST SCHOOLS							
<b>BALLARAT</b> <b>EREA ST JOSEPH'S SPECIAL ASSISTANCE SCHOOL</b> 9-11 Humffray St North	Troy Strybosch	Rachel Ryan <i>Director of Business Operations:</i> Rod Hansen	P 03 9269 6980 E <a href="mailto:ballarat@stjosephs.vic.edu.au">ballarat@stjosephs.vic.edu.au</a> W <a href="http://www.stjosephs.vic.edu.au">www.stjosephs.vic.edu.au</a>	9-11 Humffray St North Ballarat VIC 3350	Edmund Rice Education Aust	Rev Justin Driscoll	



NORTHERN ZONE LOCATIONS

- Charlton
- Donald
- Hopetoun
- Merbein
- Mildura
- Red Cliffs
- Robinvale
- Sea Lake
- St Arnaud
- Swan Hill



# SCHOOL CONTACTS – NORTHERN ZONE

SCHOOL AND LOCALITY	PRINCIPAL	ADMIN SUPPORT	CONTACT DETAILS	POSTAL ADDRESS	GOV AUTHORITY	PARISH PRIEST	E #
PRIMARY SCHOOLS							
<b>CHARLTON</b> <b>ST JOSEPH'S CATHOLIC SCHOOL</b> 25 Watson St	Mary Hogan	Cate Olive	P 03 5491 1343 E <a href="mailto:principal@sjcharlton.catholic.edu.au">principal@sjcharlton.catholic.edu.au</a> W <a href="http://www.sjcharlton.catholic.edu.au">www.sjcharlton.catholic.edu.au</a>	PO Box 116 Charlton VIC 3525	DOBCEL	Rev Gerard Prunty	E2018
<b>DONALD</b> <b>ST MARY'S PRIMARY SCHOOL</b> 134 Woods St	Melissa Drum	Maree Egan	P 03 5497 1116 E <a href="mailto:principal@smdonald.catholic.edu.au">principal@smdonald.catholic.edu.au</a> W <a href="http://www.smdonald.catholic.edu.au">www.smdonald.catholic.edu.au</a>	134 Woods St Donald VIC 3480	DOBCEL	Rev Gerard Prunty	E2008
<b>HOPETOUN</b> <b>ST JOSEPH'S CATHOLIC PRIMARY SCHOOL</b> 33 Lascelles St	Cynthia Maiden	Julie Grace	P 03 5083 3296 E <a href="mailto:principal@sjhopetoun.catholic.edu.au">principal@sjhopetoun.catholic.edu.au</a> W <a href="http://www.sjhopetoun.catholic.edu.au">www.sjhopetoun.catholic.edu.au</a>	PO Box 186 Hopetoun VIC 3396	DOBCEL	Monsignor Glynn Murphy	E2055
<b>MERBEIN</b> <b>OUR LADY OF THE SACRED HEART PRIMARY SCHOOL</b> 18 Box St	Narelle Gallagher	Mia Mottram <i>Business Manager:</i> Carolyn Clementson	P 03 5025 2258 E <a href="mailto:principal@olshmerbein.catholic.edu.au">principal@olshmerbein.catholic.edu.au</a> W <a href="http://www.olshmerbein.catholic.edu.au">www.olshmerbein.catholic.edu.au</a>	PO Box 416 Merbein VIC 3505	DOBCEL	Rev Matthew Thomas	E2046
<b>MILDURA</b> <b>SACRED HEART PRIMARY SCHOOL</b> 168 Twelfth St	Mark Gibson	Candy Fleming <i>Business Manager:</i> Mary Avery	P 03 5023 1204 E <a href="mailto:principal@shmildura.catholic.edu.au">principal@shmildura.catholic.edu.au</a> W <a href="http://www.shmildura.catholic.edu.au">www.shmildura.catholic.edu.au</a>	PO Box 5056 Mildura VIC 3500	DOBCEL	Rev Matthew Thomas	E2058
<b>MILDURA</b> <b>ST PAUL'S PRIMARY SCHOOL</b> 716 Fourteenth St	Melissa Sutherland	Loretta Audino <i>Business Manager:</i> Kathryn Byrnes	P 03 5023 4567 E <a href="mailto:principal@spmildura.catholic.edu.au">principal@spmildura.catholic.edu.au</a> W <a href="http://www.spmildura.catholic.edu.au">www.spmildura.catholic.edu.au</a>	PO Box 4004 Mildura VIC 3500	DOBCEL	Rev Matthew Thomas	E2066
<b>RED CLIFFS</b> <b>ST JOSEPH'S PRIMARY SCHOOL</b> 17 Fitzroy Ave	Naomi Kennedy	Julie Minaudo	P 03 5024 1654 E <a href="mailto:principal@sjredcliffs.catholic.edu.au">principal@sjredcliffs.catholic.edu.au</a> W <a href="http://www.sjredcliffs.catholic.edu.au">www.sjredcliffs.catholic.edu.au</a>	17 Fitzroy Ave Red Cliffs VIC 3496	DOBCEL	Rev Matthew Thomas	E2047
<b>ROBINVALE</b> <b>ST MARY'S F-8 SCHOOL</b> 12 Watkin St	Andrea Welsh	Lisa Zappia <i>Business Manager:</i> Gabriella Cardin	P 03 5026 3483 E <a href="mailto:principal@smrobinvale.catholic.edu.au">principal@smrobinvale.catholic.edu.au</a> W <a href="http://www.smrobinvale.catholic.edu.au">www.smrobinvale.catholic.edu.au</a>	12 Watkin St Robinvale VIC 3549	DOBCEL	Rev Shaiju Matthew	E2060
<b>SEA LAKE</b> <b>ST MARY'S CATHOLIC PRIMARY SCHOOL</b> 47 Hannon St	Chris Proctor	Alison McClelland Jane Stacey	P 03 5070 1272 E <a href="mailto:principal@smsealake.catholic.edu.au">principal@smsealake.catholic.edu.au</a> W <a href="http://www.smsealake.catholic.edu.au">www.smsealake.catholic.edu.au</a>	47 Hannon St Sea Lake VIC 3533	DOBCEL	Rev James Kerr	E2059
<b>ST ARNAUD</b> <b>ST PATRICK'S PRIMARY SCHOOL</b> 5 Wattle St	Trinity Johns	Katrina Cheeseman	P 03 5495 1038 E <a href="mailto:principal@spstarnaud.catholic.edu.au">principal@spstarnaud.catholic.edu.au</a> W <a href="http://www.spstarnaud.catholic.edu.au">www.spstarnaud.catholic.edu.au</a>	PO Box 247 St Arnaud VIC 3478	DOBCEL	Rev Gerard Prunty	E2015



## SCHOOL CONTACTS – NORTHERN ZONE

SCHOOL AND LOCALITY	PRINCIPAL	ADMIN SUPPORT	CONTACT DETAILS	POSTAL ADDRESS	GOV AUTHORITY	PARISH PRIEST	E #
PRIMARY SCHOOLS							
<b>SWAN HILL</b> <b>ST MARY'S PRIMARY SCHOOL</b> 2 Murlong St	Kate Quin	Emma Brown	P 03 5033 2541 E <a href="mailto:principal@smswanhill.catholic.edu.au">principal@smswanhill.catholic.edu.au</a> W <a href="http://www.smswanhill.catholic.edu.au">www.smswanhill.catholic.edu.au</a>	PO Box 727 Swan Hill VIC 3585	DOBCEL	Rev James Kerr	E2040
SECONDARY SCHOOLS							
<b>MILDURA</b> <b>ST JOSEPH'S COLLEGE</b> 154 Twelfth St	Greg Kluske	Danielle McGlashan <i>Business Manager:</i> David Lim	P 03 5018 8012 E <a href="mailto:principal@sjcmda.vic.edu.au">principal@sjcmda.vic.edu.au</a> W <a href="http://www.sjcmda.vic.edu.au">www.sjcmda.vic.edu.au</a>	154 Twelfth St Mildura VIC 3500	Mercy Education Ltd	Rev Matthew Thomas	E2016
<b>SWAN HILL</b> <b>ST MARY MACKILLOP COLLEGE</b> 53 McCrae St	Michelle Haeusler	Emma Webb <i>Business Manager:</i> David Rush	P 03 5032 9771 E <a href="mailto:principal@mackillopsh.vic.edu.au">principal@mackillopsh.vic.edu.au</a> W <a href="http://www.smmc.vic.edu.au">www.smmc.vic.edu.au</a>	PO Box 971 Swan Hill VIC 3585	DOBCEL	Rev James Kerr	E2070

## SCHOOL CONTACTS – MID-NORTH ZONE



### MID-NORTH ZONE LOCATIONS

- Ararat
- Casterton
- Coleraine
- Edenhope
- Hamilton
- Horsham
- Maryborough
- Murtoa
- Nhill
- Penshurst
- Stawell
- Warracknabeal



# SCHOOL CONTACTS – MID-NORTH ZONE

SCHOOL AND LOCALITY	PRINCIPAL	ADMIN SUPPORT	CONTACT DETAILS	POSTAL ADDRESS	GOV AUTHORITY	PARISH PRIEST	E #
PRIMARY SCHOOLS							
<b>ARARAT</b> <b>ST MARY'S PARISH PRIMARY SCHOOL</b> Moore St	Roxanne Leed	Jess Praag <i>Business Manager:</i> Jane Pola	P 03 5352 1796 E <a href="mailto:principal@smararat.catholic.edu.au">principal@smararat.catholic.edu.au</a> W <a href="http://www.smararat.catholic.edu.au">www.smararat.catholic.edu.au</a>	PO Box 329 Ararat VIC 3377	DOBCEL	Rev Neville Stanislaus	E2028
<b>CASTERTON</b> <b>SACRED HEART PRIMARY SCHOOL</b> 39 Robertson St	Suzie McManus	Prue Adey	P 03 5581 1131 E <a href="mailto:principal@shcasterton.catholic.edu.au">principal@shcasterton.catholic.edu.au</a> W <a href="http://www.shcasterton.catholic.edu.au">www.shcasterton.catholic.edu.au</a>	39 Robertson St Casterton VIC 3311	DOBCEL	Rev Patrick Mugavin & Rev George Kuruvila	E2021
<b>COLERAINE</b> <b>ST JOSEPH'S SCHOOL</b> 67 Read St	Daniel (Danny) Franc	Fiona Fitzgerald	P 03 5575 2131 E <a href="mailto:principal@sjcoleraine.catholic.edu.au">principal@sjcoleraine.catholic.edu.au</a> W <a href="http://www.sjcoleraine.catholic.edu.au">www.sjcoleraine.catholic.edu.au</a>	PO Box 17 Coleraine VIC 3315	DOBCEL	Rev Patrick Mugavin & Rev George Kuruvila	E2031
<b>EDENHOPE</b> <b>ST MALACHY'S SCHOOL</b> 34 Lake St	Gorgia Craig and Sherryn Simpson (Co-principals)	Barb Ryan	P 03 5585 1396 E <a href="mailto:principal@smedenhope.catholic.edu.au">principal@smedenhope.catholic.edu.au</a> W <a href="http://www.smedenhope.catholic.edu.au">www.smedenhope.catholic.edu.au</a>	34 Lake St Edenhope VIC 3318	DOBCEL	Rev Patrick Mugavin & Rev George Kuruvila	E2052
<b>HAMILTON</b> <b>ST MARY'S PRIMARY SCHOOL</b> 49 Hiller Lane	Terrielynn Groves	Helen O'Brien	P 03 5551 9000 E <a href="mailto:principal@smhamilton.catholic.edu.au">principal@smhamilton.catholic.edu.au</a> W <a href="http://www.smhamilton.catholic.edu.au">www.smhamilton.catholic.edu.au</a>	PO Box 788 Hamilton VIC 3300	DOBCEL	Rev Patrick Mugavin	E2035
<b>HORSHAM</b> <b>SS MICHAEL AND JOHN'S PRIMARY SCHOOL</b> 7 McLachlan St	Louise Chesterfield	Jane Overman <i>Business Manager:</i> Anna Carberry	P 03 5382 3000 E <a href="mailto:principal@smjhorsham.catholic.edu.au">principal@smjhorsham.catholic.edu.au</a> W <a href="http://www.smjhorsham.catholic.edu.au">www.smjhorsham.catholic.edu.au</a>	7 McLachlan St Horsham VIC 3400	DOBCEL	Monsignor Glynn Murphy	E2023
<b>MARYBOROUGH</b> <b>ST AUGUSTINE'S PRIMARY SCHOOL</b> 58 Burke St	Sonia Turner	Amber O'Kearney	P 03 5460 4440 E <a href="mailto:principal@samaryborough.catholic.edu.au">principal@samaryborough.catholic.edu.au</a> W <a href="http://www.samaryborough.catholic.edu.au">www.samaryborough.catholic.edu.au</a>	58 Burke St Maryborough VIC 3465	DOBCEL	Rev John Monaghan	E2006
<b>MURTOA</b> <b>OUR LADY HELP OF CHRISTIANS SCHOOL</b> 15 Munro St	Christopher McCumstie	Joan Lane-Storey	P 03 5385 2526 E <a href="mailto:principal@olhcmurtoa.catholic.edu.au">principal@olhcmurtoa.catholic.edu.au</a> W <a href="http://www.olhcmurtoa.catholic.edu.au">www.olhcmurtoa.catholic.edu.au</a>	PO Box 92 Murtoa VIC 3390	DOBCEL	Monsignor Glynn Murphy	E2063
<b>NHILL</b> <b>ST PATRICK'S PRIMARY SCHOOL</b> 29 Leahy St	Kingsley Dagleish	Karen Rintoule	P 03 5391 1575 E <a href="mailto:principal@spnhill.catholic.edu.au">principal@spnhill.catholic.edu.au</a> W <a href="http://www.spnhill.catholic.edu.au">www.spnhill.catholic.edu.au</a>	PO Box 169 Nhill VIC 3418	DOBCEL	Monsignor Glynn Murphy	E2050
<b>PENSHURST</b> <b>ST JOSEPH'S PRIMARY SCHOOL</b> 11 Martin St	John O'Sullivan	Andrea Page	P 03 5576 5438 E <a href="mailto:principal@sjpenshurst.catholic.edu.au">principal@sjpenshurst.catholic.edu.au</a> W <a href="http://www.sjpenshurst.catholic.edu.au">www.sjpenshurst.catholic.edu.au</a>	PO Box 42 Penshurst VIC 3289	DOBCEL	Rev Patrick Mugavin	E2019
<b>STAWELL</b> <b>ST PATRICK'S CATHOLIC PRIMARY SCHOOL</b> 55 Patrick St	Bettina Bird	Anna Wadge	P 03 5358 2493 E <a href="mailto:principal@spstawell.catholic.edu.au">principal@spstawell.catholic.edu.au</a> W <a href="http://www.spstawell.catholic.edu.au">www.spstawell.catholic.edu.au</a>	PO Box 856 Stawell VIC 3380	DOBCEL	Rev Neville Stanislaus	E2036



## SCHOOL CONTACTS – MID-NORTH ZONE

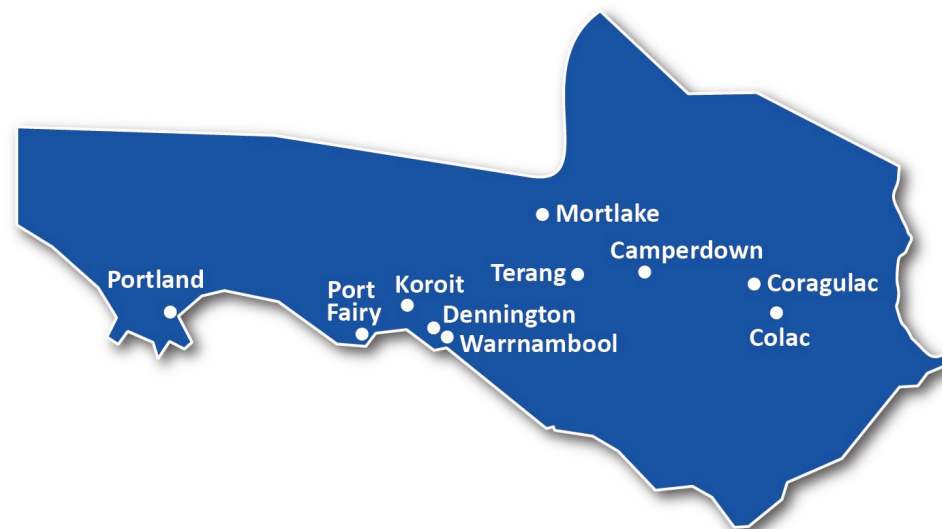
SCHOOL AND LOCALITY	PRINCIPAL	ADMIN SUPPORT	CONTACT DETAILS	POSTAL ADDRESS	GOV AUTHORITY	PARISH PRIEST	E #
PRIMARY SCHOOLS							
<b>WARRACKNABEAL</b> <b>ST MARY'S CATHOLIC PRIMARY SCHOOL</b> 2-8 Campbell St	Julie Leonard	Paula Winsall	P 03 5398 2001 E <a href="mailto:principal@smwarracknabeal.catholic.edu.au">principal@smwarracknabeal.catholic.edu.au</a> W <a href="http://www.smwarracknabeal.catholic.edu.au">www.smwarracknabeal.catholic.edu.au</a>	PO Box 283 Warracknabeal VIC 3393	DOBCEL	Monsignor Glynn Murphy	E2027
SECONDARY SCHOOLS							
<b>ARARAT</b> <b>MARIAN COLLEGE</b> 304 Barkly St	Catherine Howison	Marika Stirling <i>Business Manager:</i> Leonie McGuckian	P 03 5352 3861 E <a href="mailto:principal@mcararat.catholic.edu.au">principal@mcararat.catholic.edu.au</a> W <a href="http://www.mcararat.catholic.edu.au">www.mcararat.catholic.edu.au</a>	PO Box 314 Ararat VIC 3377	Kildare Education Ministries	Rev Neville Stanislaus	E2020
<b>HAMILTON</b> <b>MONIVAE COLLEGE</b> 133 Ballarat Rd	Jonathan Rowe	Meg Cook <i>Business Manager:</i> Jim Bailey	P 03 5551 1200 E <a href="mailto:principal@monivae.vic.edu.au">principal@monivae.vic.edu.au</a> W <a href="http://www.monivae.com">www.monivae.com</a>	PO Box 423 Hamilton VIC 3300	Missionaries of the Sacred Heart	Rev Patrick Mugavin	E2054
<b>HORSHAM</b> <b>ST BRIGID'S COLLEGE</b> 97 Robinson St	Gerard Raven	Sharon Fedke <i>Business Manager:</i> Tony Nield	P 03 5382 3545 E <a href="mailto:principal@stbc.vic.edu.au">principal@stbc.vic.edu.au</a> W <a href="http://www.stbc.vic.edu.au">www.stbc.vic.edu.au</a>	PO Box 542 Horsham VIC 3545	DOBCEL	Monsignor Glynn Murphy	E2044

## SCHOOL CONTACTS – SOUTHERN ZONE



### SOUTHERN ZONE LOCATIONS

- Camperdown
- Colac
- Coragulac
- Dennington
- Koroit
- Mortlake
- Port Fairy
- Portland
- Terang
- Warrnambool



# SCHOOL CONTACTS – SOUTHERN ZONE

SCHOOL AND LOCALITY	PRINCIPAL	ADMIN SUPPORT	CONTACT DETAILS	POSTAL ADDRESS	GOV AUTHORITY	PARISH PRIEST	E #
<b>PRIMARY SCHOOLS</b>							
<b>CAMPERDOWN</b> <b>ST PATRICK'S SCHOOL</b> 4 Dimora Ave	Darren Lloyd	Debbie Cheslett	P 03 5593 1962 E <a href="mailto:principal@spcamperdown.catholic.edu.au">principal@spcamperdown.catholic.edu.au</a> W <a href="http://www.spcamperdown.catholic.edu.au">www.spcamperdown.catholic.edu.au</a>	4 Dimora Ave Camperdown VIC 3260	DOBCEL	Rev George Kuruvila MST	E2034
<b>COLAC</b> <b>SACRED HEART PRIMARY SCHOOL</b> 125 Hart St	Karl Dwyer	Rhonda Miraglia <i>Business Manager:</i> Emmalie Cain	P 03 5231 5292 E <a href="mailto:principal@shcolac.catholic.edu.au">principal@shcolac.catholic.edu.au</a> W <a href="http://www.shcolac.catholic.edu.au">www.shcolac.catholic.edu.au</a>	PO Box 221 Colac VIC 3250	DOBCEL	Rev Andrew Hayes	E2062
<b>COLAC</b> <b>ST MARY'S CATHOLIC PRIMARY SCHOOL</b> 15-27 Calvert St	Michael Mahoney	Kathryn Cecil	P 03 5231 3640 E <a href="mailto:principal@smcolac.catholic.edu.au">principal@smcolac.catholic.edu.au</a> W <a href="http://www.smcolac.catholic.edu.au">www.smcolac.catholic.edu.au</a>	PO Box 24 Colac VIC 3250	DOBCEL	Rev Andrew Hayes	E2024
<b>CORAGULAC</b> <b>ST BRENDAN'S CATHOLIC PRIMARY SCHOOL</b> 727 Corangamite Lake Rd	Leanne Eastman	Gracesyn Watts	P 03 5233 1464 E <a href="mailto:principal@sbcoragulac.catholic.edu.au">principal@sbcoragulac.catholic.edu.au</a> W <a href="http://www.sbcoragulac.catholic.edu.au">www.sbcoragulac.catholic.edu.au</a>	727 Corangamite Lake Rd Coragulac VIC 3249	DOBCEL	Rev TBC	E2042
<b>DENNINGTON</b> <b>ST JOHN'S PRIMARY SCHOOL</b> 263 Russell St	Ben van de Camp	Julie Bartlett	P 03 5562 5362 E <a href="mailto:principal@sjdennington.catholic.edu.au">principal@sjdennington.catholic.edu.au</a> W <a href="http://www.sjdennington.catholic.edu.au">www.sjdennington.catholic.edu.au</a>	263 Russell St Dennington VIC 3280	DOBCEL	Rev John Fitzgerald	E2043
<b>KOROIT</b> <b>ST PATRICK'S PRIMARY SCHOOL</b> 20 Queen St	Tegan McDonald	Bronie Moloney <i>Business Manager:</i> Kate Dobson	P 03 5565 8208 E <a href="mailto:principal@spkoroit.catholic.edu.au">principal@spkoroit.catholic.edu.au</a> W <a href="http://www.spkoroit.catholic.edu.au">www.spkoroit.catholic.edu.au</a>	20 Queen St Koroit VIC 3282	DOBCEL	Rev John Fitzgerald	E2022
<b>MORTLAKE</b> <b>ST COLMAN'S PRIMARY SCHOOL</b> 28 Dunlop St	Janet Cain	Jane Lee	P 03 5599 2285 E <a href="mailto:principal@scmortlake.catholic.edu.au">principal@scmortlake.catholic.edu.au</a> W <a href="http://www.scmortlake.catholic.edu.au">www.scmortlake.catholic.edu.au</a>	28 Dunlop St Mortlake VIC 3272	DOBCEL	Rev George Kuruvila MST	E2051
<b>PORT FAIRY</b> <b>ST PATRICK'S PARISH PRIMARY SCHOOL</b> 9-11 William St	Olga Lyons	Janine Moloney <i>Business Manager:</i> Rebecca Amor	P 03 5568 1371 E <a href="mailto:principal@spportfairy.catholic.edu.au">principal@spportfairy.catholic.edu.au</a> W <a href="http://www.spportfairy.catholic.edu.au">www.spportfairy.catholic.edu.au</a>	9-11 William St Port Fairy VIC 3284	DOBCEL	Rev John Fitzgerald	E2029
<b>PORTLAND</b> <b>ALL SAINTS PARISH SCHOOL</b> Cnr Must St and Fawthrop St	Jamie Walsh	Rochelle Bailey	P 03 5523 3654 E <a href="mailto:principal@asportland.catholic.edu.au">principal@asportland.catholic.edu.au</a> W <a href="http://www.asportland.catholic.edu.au">www.asportland.catholic.edu.au</a>	PO Box 800 Portland VIC 3305	DOBCEL	Rev Gregory Tait	E2069
<b>TERANG</b> <b>ST THOMAS' PRIMARY SCHOOL</b> 1 Lyons St	Matthew Uzkuraitis	Linda Kenna	P 03 5592 1925 E <a href="mailto:principal@stterang.catholic.edu.au">principal@stterang.catholic.edu.au</a> W <a href="http://www.stterang.catholic.edu.au">www.stterang.catholic.edu.au</a>	PO Box 123 Terang VIC 3264	DOBCEL	Rev George Kuruvila MST	E2037



# SCHOOL CONTACTS – SOUTHERN ZONE

SCHOOL AND LOCALITY	PRINCIPAL	ADMIN SUPPORT	CONTACT DETAILS	POSTAL ADDRESS	GOV AUTHORITY	PARISH PRIEST	E #
<b>PRIMARY SCHOOLS</b>							
<b>WARRNAMBOOL ST JOSEPH'S PRIMARY SCHOOL</b> 70 Botanic Rd	Matthew O'Brien	Cathy Duynhoven	P 03 5561 1343 E <a href="mailto:principal@sjwarrnambool.catholic.edu.au">principal@sjwarrnambool.catholic.edu.au</a> W <a href="http://www.sjwarrnambool.catholic.edu.au">www.sjwarrnambool.catholic.edu.au</a>	70 Botanic Rd Warrnambool VIC 3280	DOBCEL	Rev John Fitzgerald	E2025
<b>WARRNAMBOOL EAST OUR LADY HELP OF CHRISTIANS PRIMARY SCHOOL</b> 28 Selby Rd	Stephen Madden	<i>Finance:</i> Christine Cook  <i>General Admin:</i> Kristen Baillie Rachel Kelly	P 03 5562 5559 E <a href="mailto:principal@olhcwarrnambool.catholic.edu.au">principal@olhcwarrnambool.catholic.edu.au</a> W <a href="http://www.olhcwarrnambool.catholic.edu.au">www.olhcwarrnambool.catholic.edu.au</a>	PO Box 62 Warrnambool VIC 3280	DOBCEL	Rev John Fitzgerald	E2065
<b>WARRNAMBOOL WEST ST PIUS X PARISH SCHOOL</b> 32-34 Hoddle St	Nick Murrell	Anne Kerr	P 03 5562 2506 E <a href="mailto:principal@spwarrnambool.catholic.edu.au">principal@spwarrnambool.catholic.edu.au</a> W <a href="http://www.spwarrnambool.catholic.edu.au">www.spwarrnambool.catholic.edu.au</a>	32-34 Hoddle St Warrnambool West VIC 3280	DOBCEL	Rev John Fitzgerald	E2061
<b>SECONDARY SCHOOLS</b>							
<b>CAMPERDOWN MERCY REGIONAL COLLEGE</b> Henderson St	Sharon Gillett	Nicole Darcy <i>Business Manager:</i> Judith Murfitt	P 03 5593 2011 E <a href="mailto:principal@mercy.vic.edu.au">principal@mercy.vic.edu.au</a> W <a href="http://www.mercy.vic.edu.au">www.mercy.vic.edu.au</a>	PO Box 152 Camperdown VIC 3260	DOBCEL	Rev George Kuruvila MST	E2033
<b>COLAC TRINITY COLLEGE COLAC</b> 119 Hart St	Paul Clohesy	Jenny Barake <i>Business Manager:</i> David Testa	P 03 5233 9200 E <a href="mailto:principal@tcc.vic.edu.au">principal@tcc.vic.edu.au</a> W <a href="http://www.tcc.vic.edu.au">www.tcc.vic.edu.au</a>	PO Box 23 Colac VIC 3250	DOBCEL	Rev Andrew Hayes	E2072
<b>WARRNAMBOOL EMMANUEL COLLEGE</b> 140-150 Botanic Rd	Rachel McGenniken	Suzanne Dwyer <i>Business Manager:</i> Stephen Kerr	P 03 5560 0888 E <a href="mailto:principal@emmanuel.vic.edu.au">principal@emmanuel.vic.edu.au</a> W <a href="http://www.emmanuel.vic.edu.au">www.emmanuel.vic.edu.au</a>	PO Box 486 Warrnambool VIC 3280	Mercy Education Limited	Rev John Fitzgerald	E2080
<b>SPECIALIST SCHOOLS</b>							
<b>COLAC SAINTS COLLEGE</b> (Formerly St Joseph's School) 174 Hearn St	Mark Kennedy	Jodi McLeod <i>Director of Business Operations:</i> Rod Hansen	P 03 5297 1810 E <a href="mailto:mike.panter@saints.vic.edu.au">mike.panter@saints.vic.edu.au</a> W <a href="http://www.saintscollege.vic.edu.au">www.saintscollege.vic.edu.au</a>	174 Hearn St Colac VIC 3250	Edmund Rice Education Aust	Rev Andrew Hayes	E2079

DIOCESE  
OF  
BALLARAT  
CATHOLIC  
EDUCATION  
LIMITED



**Diocese of Ballarat Catholic Education Limited  
(DOBCEL)**

200 Gillies Street North, Lake Wendouree, VIC 3350

P 03 4344 4350 | E [execdirector@dobcel.catholic.edu.au](mailto:execdirector@dobcel.catholic.edu.au) | W [dobcel.catholic.edu.au](http://dobcel.catholic.edu.au)